

AMENDMENT No.3 - 2016 COMBINED CLUBS WEST HARBOUR WINTER SERIES SAILING INSTRUCTIONS

AMENDMENT No. 3 – Inclusion of Short Courses to be sailed when the ‘S’ Flag is displayed with the Warning Signal for a Division.

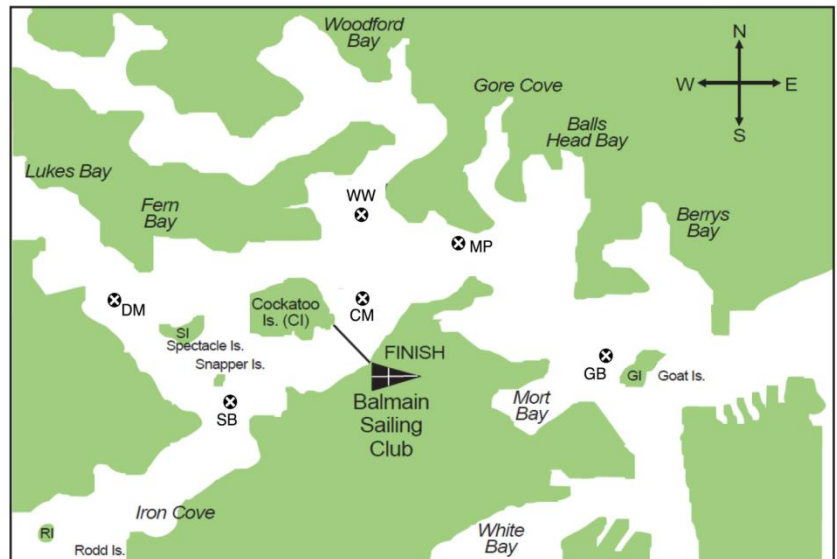
Add new clause 5.2

5.2 When the ‘S’ Flag is displayed with the Warning Signal for a Division, the course for that division will be shortened as indicated in Attachment A Courses.

Replace Attachment A Courses of Amendment No.1 to Combined Clubs West Harbour Winter Series Sailing Instructions with :-

List of Marks

- MP Laid mark S of Mann’s Point
- CI Cockatoo Island
- DM Laid mark NW of Spectacle Island
- GB Laid mark W of Goat Island
- GI Goat Island
- SB Laid mark SE of Snapper Island
- SI Spectacle Island
- WW Laid Mark approximately 150 metres E of Woolwich Dock.
- CM Laid Mark E of Cockatoo Island.
- FD Fort Denison
- Ckl Clark Island
- SM Shark Island and YA Mark approx. 10m south east of Shark Island



Courses

Divisions 1 & 2 (approx. 10nm)

1	Start - GI(P) - MP(P) - DM(P) - SB(P) - GI(P) - MP(P) - DM(P) - SB(P) - Finish
2	Start - DM(P) - SB(P) - GI(P) - MP(P) - DM(P) - SB(P) - GI(P) - MP(P) - CI(P) - Finish
3	Start - CM - SB - DM - WW - GI - CM - WW - CI - SB - DM - WW - CM - Finish
4	(Down Harbour Course) Start - GI - FD - SM - Ckl - FD - GI - Finish

Divisions 3, 4 & 5 (approx. 8nm)

1	Start - GB(P) - MP(P) - SI(P) - SB(P) - GB(P) - MP(P) - SI(P) - SB(P) - Finish
2	Start - SI(P) - SB(P) - GB(P) - MP(P) - SI(P) - SB(P) - GB(P) - MP(P) - CI(P) - Finish
3	Start - CM - SB - SI - WW - GB - CM - WW - CI - SB - SI - WW - CM - Finish
4	(Down Harbour Course) Start - GI - FD - Ckl - FD - GI - Finish

Short Courses

Divisions 1 & 2 (approx. 8nm)

1	Start - GB(P) - MP(P) - DM(P) - SB(P) - GB(P) - MP(P) - DM(P) - SB(P) - Finish
2	Start - DM(P) - SB(P) - GB(P) - MP(P) - DM(P) - SB(P) - GB(P) - MP(P) - CI(P) - Finish
3	Start - CM - SB - DM - WW - GB - CM - WW - CI - SB - DM - WW - CM - Finish
4	(Down Harbour Course) Start - GI - FD - Ckl - FD - GI - Finish

Divisions 3, 4 & 5 (approx. 6.5nm)

1	Start - MP(P) - SI(P) - SB(P) - MP(P) - SI(P) - SB(P) - Finish
2	Start - SI(P) - SB(P) - MP(P) - SI(P) - SB(P) - MP(P) - CI(P) - Finish
3	Start - CM - SB - SI - WW - MP - CM - WW - CI - SB - SI - WW - CM - Finish
4	(Down Harbour Course) Start - GI - FD - GI - Finish

(P) leave mark to port when rounding.