

# Humbug Lite

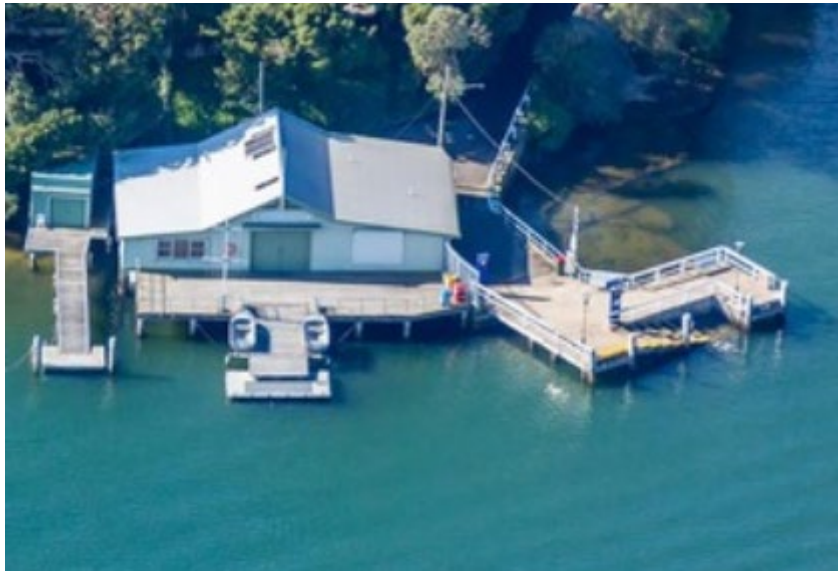
*The Alternate GFS Newsletter*

*Edition 2, July 2022*

## **GFS AGM**

The 2022 Annual General Meeting of Greenwich Flying Squadron Inc. will be held at the Clubhouse on  
**Tuesday 12 July 2022 commencing at 7.30pm.**

## **Club Working Bee**



The GFS clubhouse has been asleep over winter, it is now time to awaken it in preparation for the coming 2022 – 2023 sailing season. With your help it will look chipper and ready for action! Join the crowd on –

**Saturday, August 13 from 9.00am**

## **2022 West Harbour Winter Series – Remaining Races**

Sunday	July 3	Race 3
Sunday	July 17	Race 4
Sunday	July 31	Race 5
Sunday	August 14	Race 6
Sunday	August 28	Race 7

The intention is to publish this newsletter once per month. However, your contributions (especially from the 'Deck of Knowledge' - DOK) will make each issue more interesting. Please send any material relevant to club activities, members or anything really to [phare1531@gmail.com](mailto:phare1531@gmail.com).

## Safety Inspections

For the 2022 – 2023 season you will require an equipment audit by an accredited Equipment Auditor.

Audits will be held at the GFS clubhouse at the nominated times in the club Sailing Program.

**Prior to your inspection download and complete the audit form from the GFS website and have the equipment laid out in the cockpit and cabin before presenting your yacht for the audit.**

### From Australian Sailing - Responsibility of the Person in Charge Policy

Equipment Auditors frequently deal with equipment where determination of compliance requires judgement.

The National Safety Committee adopted the following policy:

Where judgement is required to audit the compliance of an item, an Equipment Auditor shall rely primarily on the opinion of the person in charge of the boat. The Equipment Auditor may still decline to complete the audit.

In the event the Equipment Auditor declines to complete the audit they must note the reasons for the declination on the audit form.

Reasons -

1. Special Regulation 1.02.1 explicitly places the responsibility of the soundness of all gear, its maintenance and stowage, and the boat's seaworthiness on the person in charge.
2. Special Regulations 1.02.2 whilst providing for inspection of a boat does not limit or reduce the responsibilities of the person in charge.
3. An example of needing to apply judgement is determining what stout buckets are under Special Regulation 3.20.9. The Equipment Auditor shall rely primarily on the opinion of the person in charge of the boat as to whether the buckets presented to the audit are stout or not.

## Website and Facebook

It is important to regularly check the GFS website for important club information. The site is the vehicle for communicating changes to procedures and upcoming events. Notices, changes, results, instructions, season programs and race entry details are communicated via the website - <https://gfs.org.au/>

The GFS Facebook page is for members to share stories, photographs, alerts and events relevant to club and wider community events - <https://www.facebook.com/groups/138966136751023/>.



**Sweeney Todd** – Julian Todd - Port Stephens 2022 Day 1 (image courtesy Promocean Media)

## Images.

A BIG SHOUT OUT to **Mark Palmer**, his images on the GFS Facebook site are always well appreciated by skippers and crew.



**Tana** – Pam Joy - West Harbour Winter Series Race 2 - Image Mark Palmer

## WHWS – GFS point score after Race 2.

Division 1 (Yellow) Entrants Start : 11:30												
Sail No	Boat Name	First Name	Last Name	Design	1	2	3	4	5	6	7	Total
7130	PASSION X	David	Edmiston	Didi 40 Cr	4	15						19
7600	UTOPIA	John	Amos	Sydney 38	14	15						29

Division 2 (Blue) Entrants Start : 11:35												
Sail No	Boat Name	First Name	Last Name	Design	Race 1	Race 2	Race 3	Race 4	Race 5	Race 6	Race 7	Total
4113	SPEEDWELL	John	Moffat	Young 88	18	18						36
AUS872	JESTER	David	Kiddell	J70	18	18						36
AUS1049	ETCHIBAN	Andrew	McCracken	Etchells	3	10						13
AUS1163	WHISKEY TANGO FOXTRO	Mark Jansons	Stuart Clark	Etchells	11	1						12
GBR32	JESTER	Tim	Harrington	Sydney 32	2	18						20

Division 3 (Black) Entrants Start : 11:40												
Sail No	Boat Name	First Name	Last Name	Design	Race 1	Race 2	Race 3	Race 4	Race 5	Race 6	Race 7	Total
3425	G-WHIZZ	Graeme	Davey	Elan 340	1	2						3
5673	ON Y VA!	Bruce	Hilliard	Robertson 950	1	10						11
6380	TANA	Pam	Joy	Jeanneau 32	9	1						10
7129	HASTA LA VISTA	John	Veale	Dehler 32	5	4						9
9500	WHIPLASH	Gary	McKay	Masrm 950	15	15						30

Division 4 (Green) Entrants Start : 11:45												
Sail No	Boat Name	First Name	Last Name	Design	Race 1	Race 2	Race 3	Race 4	Race 5	Race 6	Race 7	Total
28	SALTY SEADOG II	Carl	Nicholls	Holland 30	8	4						12
3127	CAPRIOLE	Geoffrey	Lucas	Cavalier 28	15	9						24
3608	JOKA	Cecil	Williams	Cavalier 28	6	5						11
4389	STREETFIGHTER	Ian	Smith	Peterson 30 Santana	15	16						31
7073	SERENDIPITY	Peter	May	Northshore 31	15	16						31

Season 2022 – 2023 Program

# Greenwich Flying Squadron Inc.

Bay Street, Greenwich



*Postal Address*

PO Box 5092, GREENWICH, NSW 2065

[www.gfs.org.au](http://www.gfs.org.au)

Phone and FAX – 9436 1901

**2022 - 2023**

## Season Program

For

**Yacht Divisions**

Club Committee meetings are held on the second Tuesday of each month (except January), commencing at 1930 hours.

### Entries

Year	Month	Day	Date	Final Date for Series Entries
2022	August	Saturday	27	Saturday Series
	September	Saturday	3	Down Harbour Series
		Wednesday	21	Twilight Series
	November	Saturday	9	Saturday Summer Series
		Wednesday	23	Twilight Summer Series

### Important Club Events

Year	Month	Day	Date	Event
2022	August	Saturday	13	Woking Bee - GFS Clubhouse
		Saturday	20	Equipment Audits Saturday Yachts
		Saturday	27	Equipment Audits Appointment only
	September	Saturday	17	Equipment Audits – Twilight Yachts Day 1
		Sunday	25	Equipment Audits – Twilight Yachts Day 2
	September	Wednesday	28	Compulsory Skippers' Meeting
2023	May	Saturday	27	Prize presentation from 1500 hrs
	July	Tuesday	13	AGM

Race entries via (TES) - TopYacht Entry System - TBA

Unless there is substantial change to Covid 19 restrictions sailing at GFS will proceed as normal, competitors in GFS events are to follow both the club and government prescriptions related to participation, gathering, sanitation and safety.

**Crew lists are to be entered into TopYacht prior to each race in which the yacht competes.**

## Special and West Harbour Combined Series

All Yachts registered for the Saturday and Twilight Series are eligible to enter the Saturday Down Harbour Series and Saturday Mick York Trophy Series.

The **Mick York Trophy Series** will run in conjunction with the regular Saturday Series Races. The starting sequence will begin at **1315 hours** for all Saturday Series races.

Down Harbour Series Races are sponsored by Joe Walsh Rigging.

### West Harbour Winter Series, 2022

Year	Month	Day	Date	Event	Other Information
<b>2022</b>	June	Sunday	5	WH Winter Series Race 1	Dates for the combined Balmain Sailing Club, Drummoyne Sailing Club and Greenwich Flying Squadron West Harbour Winter Series are <b>subject to change</b> .
		Sunday	19	WH Winter Series Race 2	
	July	Sunday	3	WH Winter Series Race 3	
		Sunday	17	WH Winter Series Race 4	
		Sunday	31	WH Winter Series Race 5	
	August	Sunday	14	WH Winter Series Race 6	
		Sunday	28	WH Winter Series Race 7	

### Joe Walsh Rigging Down Harbour Series

Year	Month	Date	Event
<b>2022</b>	September	10	Joe Walsh Down Harbour Race 1
	October	15	Joe Walsh Down Harbour Race 2
	November	12	Joe Walsh Down Harbour Race 3
	December	10	Joe Walsh Down Harbour Race 4
<b>2023</b>	January	14	Joe Walsh Down Harbour Race 5
	February	11	Joe Walsh Down Harbour Race 6
	March	11	Joe Walsh Down Harbour Race 7
	April	15	Joe Walsh Down Harbour Race 8

### Mick York Trophy Races

Year	Month	Date	Event
<b>2022</b>	September	24	Mick York Trophy Series Race 1
	October	29	Mick York Trophy Series Race 2
	November	26	Mick York Trophy Series Race 3
<b>2023</b>	January	21	Mick York Trophy Series Race 4
	February	25	Mick York Trophy Series Race 5
	March	25	Mick York Trophy Series Race 6
	April	29	Mick York Trophy Series Race 7

### West Harbour Summer Series, 2023

Year	Month	Day	Date	Event	Other Information
<b>2023</b>	January	Sunday	15	WH Summer Series Race 1	Dates for the combined Balmain Sailing Club, Drummoyne Sailing Club and Greenwich Flying Squadron West Harbour Summer Series are <b>subject to change</b> .
		Sunday	29	WH Summer Series Race 2	
	February	Sunday	12	WH Summer Series Race 3	
		Sunday	26	WH Summer Series Race 4	
	March	Sunday	12	WH Summer Series Race 5	
		Sunday	26	WH Summer Series Race 6	

## Twilight Series

The Twilight Starting Sequence will begin at **1735 hours** for all races which start at the GFS Clubhouse. **VHF 72** will give the countdown at the start and will be monitored during races.

Yachts are to **keep clear** of the starting box exclusion zone until 5 minutes prior to the start time of their division.

If conditions are deemed appropriate, races may start from the club launch. **Code flag "Q"** (yellow pennant) will be flown from the clubhouse flag mast. The start sequence will begin at 1745 hours.

Year	Month	Date	Event	Notes	
2022	September	17	Equipment Audits – Twilight Yachts		
		25	Equipment Audits – Twilight Yachts		
		28	Skippers' Meeting		
	October	2	Daylight Saving Commences		
		5	Spring Race 1		
		12	Spring Race 2		
		19	Spring Race 3		
		26	Spring Race 4		
		30	Balmain Regatta – details and entries to Balmain Sailing Club		
	November	2	Spring Race 5		
		9	Spring Race 6		
		16	Spring Race 7		
		23	Spring Race 8		
		30	Spring Race 9		
	December	7	Summer Race 1		
		14	Summer Race 2 and YOTS @ GFS		
		21	Summer Race 3		
28		Christmas Break – New Year break			
2023	January	4	Summer Race 4		
		11	Summer Race 5		Women's Helm Race
		18	Summer Race 6		Women's Helm Race
		25	Summer Race 7		Women's Helm Race
		26	186 <sup>th</sup> Australia Day Regatta – Sydney Harbour – no GFS race		
	February	1	Autumn Race 1 – GFS Aus Day Regatta Race		
		8	Autumn Race 2		
		15	Autumn Race 3		
		22	Autumn Race 4		
	March	1	Autumn Race 5		
		8	Autumn Race 6		
		15	Autumn Race 7		
		22	Autumn Race 8		
		29	Autumn Race 9		
	April	2	Daylight Saving Ends		

### Other Events (\* may have impact on the area in which GFS could sail)

Year	Month	Date	Event	Notes	
2022	October	30	Balmain Regatta	Entries to BSC	
	November	TBA	MHYC Seven Island Race *	Possibly 27th	
	December	6 - 12	Sail Sydney Regatta Woollahra Sailing Club *		Main Harbour
		10 - 11	CYCA Classic Yacht Regatta *		Main Harbour
		15 - 17	Sail GP *		Main Harbour
2023	January	TBA	MHYC Chaos Cup & Bedlam Point Cup *		Possibly 15th
		26	187 <sup>th</sup> Australia Day Regatta		Main Harbour
	February	12	RANSA Regatta		Main Harbour
	March	TBA	Sydney Harbour Regatta *		Possibly 5 <sup>th</sup> and 6 <sup>th</sup>
	April	3 - 9	Sail Port Stephens 2023		PSYC
October	29	Balmain Regatta		Entries to BSC	

## Saturday and Down Harbour Keelboat Series

The starting sequence will begin at **1315 hours** for all Saturday Series.

Races will start from the club launch when **code flag "Q"** (yellow pennant) is flown from the clubhouse flag mast, otherwise the start will be from the clubhouse.

**VHF 72 will give the countdown at the start and will be monitored during races and used to communicate with yachts.**

Year	Month	Date	Event	Other	
2022	August	20	<b>Equipment Audits Saturday Yachts</b>		
		27	<b>Equipment Audits Saturday Yachts</b>		
	September	3	Spring Race 1		
		10	Joe Walsh Down Harbour Race 1		
		17	Spring Race 2		
		24	Spring Race 3	MY Race 1	
		28	<b>Skippers' Meeting</b>		
	October	1	<b>Long Weekend – No Race Daylight Saving Commences – Sunday October 2</b>		
		8	Spring Race 4		
		15	Joe Walsh Down Harbour Race 2		
		22	Spring Race 5		
		29	Spring Race 6	MY Race 2	
		30	<b>Balmain Regatta – details and entries to Balmain Sailing Club</b>		
	November	5	Spring Race 7		
		12	Joe Walsh Down Harbour Race 3		
		19	Spring Race 8		
		26	Spring Race 9	MY Race 3	
	December	3	Summer Race 1		
		10	Joe Walsh Down Harbour Race 4		
		17	Summer Race 2		
24		<b>Christmas and New Year Break</b>			
31					
2023	January	7	Summer Race 3		
		14	Joe Walsh Down - Harbour Race 5		
		21	Summer Race 4	MY Race 4	
		26	<b>187<sup>th</sup> Australia Day Regatta – Sydney Harbour</b>		
		28	<b>Summer Race 5 - GFS Saturday Australia Day Race</b>		
	February	4	Autumn Race 1		
		11	Joe Walsh Down Harbour Race 6		
		18	Autumn Race 2		
		25	Autumn Race 3	MY Race 5	
	March	4	Autumn Race 4		
		11	Joe Walsh Down Harbour Race 7		
		18	Autumn Race 5		
		25	Autumn Race 6	MY Race 6	
	April	1	Autumn Race 7		
		2	<b>Daylight Saving ends</b>		
		8	<b>Easter – No Race</b>		
		15	Joe Walsh Down Harbour Race 8		
		22	Autumn Race 8		
		29	Autumn Race 9	MY Race 6	

**MY = Mick York Series**

## **Our 'Local' History – Did you know?**

### **Did you know - The Greenwich Flying Squadron was founded in 1924.**

The Greenwich Flying Squadron has a long and distinguished history. The Club's history has been captured by Rosalie Lucas in her book ***Greenwich Flying Squadron: The First 75 Years*** (Maritime Heritage Press, 1999 ISBN 1876059036, 9781876059033). [The Lane Cove and Greenwich Libraries](#) each have a copy of the book. ***A big year coming up for GFS in 2024!***

### **Did you know - Gore Creek was named after William Gore who was an interesting character.**

Early settler William Gore (1756-1845) took up land in Gore Creek in 1810. Gore was Provost Marshall during William Bligh's stint as governor. In the aftermath of the Rum Rebellion against Bligh, Gore was brought before a rebel court where he refused to plead. As a result, he was sentenced to transportation for seven years and was sent to Coal River (Newcastle) where he laboured side by side with ordinary convicts.

Gore was reinstated when Governor Macquarie arrived and received a large land grant at Artarmon in 1813. He became a leading citizen and one of the first Directors of the new Bank of NSW in 1817. He was imprisoned for misappropriating court funds in 1819. Gore escaped and made his way to 'Van Diemen's Land' where he was arrested and brought back to Sydney where he was put back in gaol again after shooting and wounding a soldier from the Woodford Bay stockade who was trespassing on his land and stealing grass.

Gore Creek and its tributaries flow through Lane Cove Bushland Reserve, Kellys Flat and Gore Creek Reserve before entering Lane Cove at Greenwich. Interestingly, the creek does not flow into Gore Cove. In early colonial days, the North Shore was a timber-getting area and timber was moved by barge down Gore Creek.

### **Did you know – There used to be a wharf at Tambourine Bay.**

A public wharf existed at the head of Tambourine Bay. It was in operation from 1889 and called Tambourine Wharf. The wharf ceased operating in November 1950 and was replaced by a ferry wharf at the foot of Wharf Road, Longueville.

Tambourine Bay was named after a lady of questionable repute named 'Tambourine Sal' or 'Tambourine Nel' who, after making a living by playing her tambourine and singing in the streets of Sydney, would sequester herself in the remoteness of the bay to escape the law.

### **Did you know – Aboriginal people were still present in the Greenwich area in the 1820s.**

The Cammeraygal clan of the Dharug-speaking people of the Eora Nation were the first inhabitants of the Greenwich area. They lived along the foreshores of the harbour hunting in the hinterland and trading with other clans. Disease and displacement had driven them out by the 1860s.

The first known occasion when a European went to the area was in 1788 when Lieutenant Henry Ball passed through while returning from the Middle Harbour area. Land grants began in 1794 and industries developed in the area during the 1830s.

Greenwich House—a two-storey Georgian home made from sandstone blocks—was built on the 20-acre (8.1 ha) estate of George Green in 1836 and still stands on the corner of George and St Lawrence Streets.



## 2022 CYCA Winter Series – Division D – Pointscore up to Race 8

The CYCA 2022 Winter Series includes ten pointscore races, three Women's Winter Series races are included (April 24, June 12 and July 17). Well done **Irukandji** for continuing success and representing GFS. Good Luck in the remaining 2 races.

Place		Skipper	Club	1	2	3	4	5	6	7	8	Points
1	<b>Irukandji</b>	<b>Stephen Nash</b>	<b>GFS</b>	4	3	(7)	1	4	2	4	4	18
2	<i>Whistling Kite</i>	Kym Evans	CYCA	1	2	2	5	6	3	(6)	6	19
3=	<i>One More No More</i>	Ian Guanaria	CYCA	3	1	1 5	3	7	7	(8)	8	22
3=	<i>Rhumba</i>	Graeme Dunlop	MHYC	6	(7)		2	3	1	5	5	22
3=	<i>Ellipse</i>	Cook, Carr, Burke	CYCA	2	(11)	4	6	5	4	1	1	22



**Joka** - Cec Williams - Cavalier 28 - image Mark Palmer

### The Cavalier 28.

The boat was originally designed by Laurie Davidson a New Zealand boat designer famous for racing boats including successful defenders and challengers for the America's Cup.

The Davidson 28 was built in New Zealand as a cruiser/racer in the mid 1970s.

It was later imported to Australia, re-designed as the Cavalier 28 and built at Pendle Hill, NSW.

There are three Cav 28s currently regularly racing in the GFS fleet - Pejo Lark, Capriole and Joka.

## PRE-RELEASE BROCHURE

# Cavalier 28

## one-design cruiser-racer

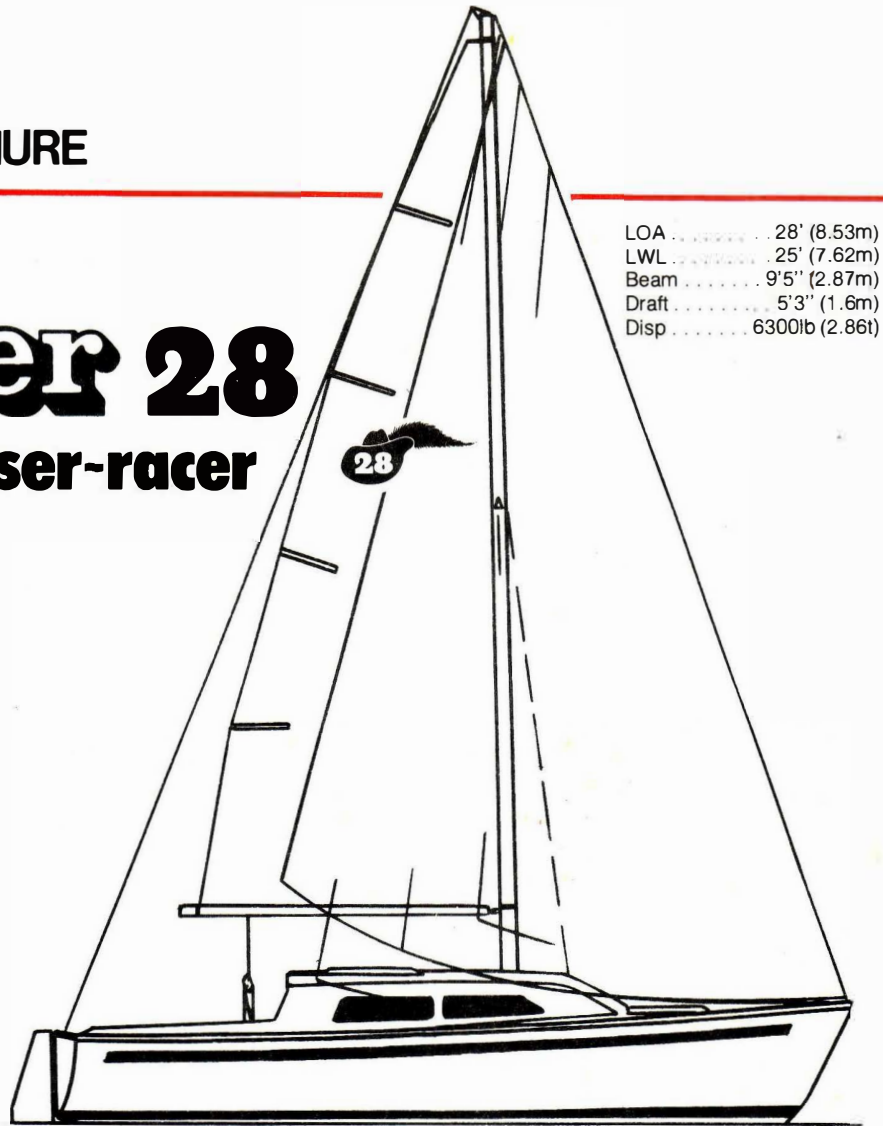
### THE CONCEPT:

Many people see one-design racing as a recent trend, a reaction to the complexities of handicap offshore racing. Offshore racing will no doubt continue to grow under the International Offshore Rule, but one-design cruiser-racer classes are beginning to replace the smaller IOR ocean racers, giving boat-for-boat racing at a fraction of the cost of the level-raters.

One-design yacht racing has been with us for a long time. Since the turn of the century, yacht clubs in Australia's capital cities have held events for the Restricted 21s, the Prince class (raised-deck 32-footers), Colleens, the Derwent class from Hobart, the famous Ranger class (designed by Cliff Gale), the Scandinavian Tumlarens, the plywood Thunderbirds and Bluebirds. All are cruiser/racers of varying styles, and have raced together as a class. Since fibreglass construction became common, a number of well-known types have raced together, but only recently have boats been designed and fitted out with the primary design function to race against boats similarly-built and equipped. The Cavalier 28 is the most recent of these, and it takes the concept further.

The one-design boats which have become popular in recent years have emphasised the racing side of their natures without worrying too much about cruising aspects. This has resulted in simple, relatively cheap, commendably fast and responsive yachts, but a number of positive factors of design (like standing headroom) have been ignored. *These craft tend to be demanding of their crews, as they have fairly large sail areas; they are, as we said earlier, primarily racing yachts.*

It can be said that all fibreglass production yachts, whether centreboard trailer yachts or long-keel, heavy displacement cruising boats, are by definition one-design. They are, but true similarity between two stock yachts usually ends with the hull shape, and this is where the Cavalier 28's concept is innovative. Manufacturers have not imposed enough controls to build boats of a suitably high standard of sameness to enable them to race as true one-



LOA ..... 28' (8.53m)  
LWL ..... 25' (7.62m)  
Beam ..... 9'5" (2.87m)  
Draft ..... 5'3" (1.6m)  
Disp ..... 6300lb (2.86t)

designs. The slightest difference in fibreglass lay-up between two boats from the same mould breaks the one-design concept, and the class must then be labelled just another production yacht. One-design class rules must govern construction (particularly in regard to hull weight and material distribution), shape, rig, sails, equipment, auxiliary power, and crew.

### THE DESIGN:

The Cavalier 28 was designed by New Zealander Laurie Davidson as a simple, fast, easily-handled cruiser/racer. Although the 28 was drawn to no rating rule, Davidson became an international "name" designer when his boats won two Half Ton, one Threequarter Ton and the One Ton Cup. He is one of that renowned school of NZ designers who, in the past decade, have shown that they design the fastest monohull yachts in the world.

The Cavalier is 28ft long with 9ft 5in beam (8.5m x 2.8m) with more than 6ft headroom (1.82m). There are six berths (one double and four singles). A complete galley, an enclosed head and a diesel inboard auxiliary motor. A lot of effort went into cockpit design, so there's good back support and the dimensions permit an easy stretch for leg support on the leeward seat. The

coamings are wide enough to sit comfortably.

### THE PERFORMANCE:

The Cavalier 28 was designed to be easy and comfortable to sail. Her beam and hull shape give her form stability, and her underwater volume is well-distributed to minimise tendencies to *round-up in gusts, such a familiar habit of modern cruiser/racers that yachtsmen have come to accept it as normal practice. Dinghy techniques shouldn't be necessary in cruiser/racers.*

### THE PRICE:

A pleasant side-effect of the one-design concept is that costs can be tightly-controlled. Sameness of construction means production disciplines can be maintained; added-on equipment is the same, and options are strictly limited. The other big benefit is the economy of scale; a production line method of construction must result in cheaper yachts. And because the customer knows exactly what he's getting, production will be independent of sales demands, a situation from which the buyer ultimately benefits.

**CAVALIER YACHTS PTY LTD,  
363 WENTWORTH AVENUE,  
PENDLE HILL, NSW 2145.  
Phone (02) 688-1666**

## Rules in Focus – RRS Rule 44 (Parts 1 and 2)

### 44 PENALTIES AT THE TIME OF AN INCIDENT

#### 44.1 Taking a Penalty

A boat may take a Two-Turns Penalty when she may have broken one or more rules of Part 2 in an incident while racing. She may take a One-Turn Penalty when she may have broken rule 31 (*touching a mark*). Alternatively, sailing instructions may specify the use of the Scoring Penalty or some other penalty, in which case the specified penalty shall replace the One-Turn and the Two-Turns Penalty.

However,

(a) when a boat may have broken a rule of Part 2 and rule 31 in the same incident she need not take the penalty for breaking rule 31;

(b) if the boat caused injury or serious damage or, despite taking a penalty, gained a significant advantage in the race or series by her breach her penalty shall be to retire.

#### 44.2 One-Turn and Two-Turns Penalties

After getting well clear of other boats as soon after the incident as possible, a boat takes a One-Turn or Two-Turns Penalty by promptly making the required number of turns in the same direction, each turn including one tack and one gybe. When a boat takes the penalty at or near the finishing line, she shall sail completely to the course side of the line before finishing.



***GFS from Shell Park***

Dead ahead, through the pitch-black night, a captain sees a light on a collision course with his ship.

Reaching for the radio, he says: "Change your course ten degrees east."

"Change yours ten degrees west," comes the reply.

The captain responds, "I'm a navy captain! Change your course, sir!"

"I'm a seaman second class," the next reply comes back. "Change your course, sir."

The captain is furious. "I'm a battleship! I'm not changing course!"

The man replies, "I'm in a lighthouse. Your call."

## Times and Heights (Fort Denison).

JULY			
Time	m	Time	m
<b>1</b>	0352 0.48	<b>16</b>	0426 0.19
	0947 1.30		1026 1.45
FR	1511 0.65	SA	1601 0.45
	2145 1.80		2230 2.01
<b>2</b>	0430 0.49	<b>17</b>	0515 0.24
	1027 1.29		1118 1.45
SA	1551 0.66	SU	1657 0.50
	2222 1.76		2321 1.87
<b>3</b>	0508 0.50	<b>18</b>	0603 0.32
	1108 1.29		1211 1.46
SU	1633 0.69	MO	1754 0.57
	2301 1.72		
<b>4</b>	0548 0.52	<b>19</b>	0012 1.71
	1152 1.30		0650 0.41
MO	1720 0.72	TU	1303 1.46
	2343 1.66		1854 0.64
<b>5</b>	0630 0.52	<b>20</b>	0103 1.53
	1240 1.32		0735 0.49
TU	1812 0.74	WE	1357 1.47
			2000 0.70
<b>6</b>	0028 1.59	<b>21</b>	0159 1.38
	0713 0.53		0819 0.56
WE	1331 1.37	TH	1452 1.49
	1911 0.76	●	2114 0.73
<b>7</b>	0119 1.51	<b>22</b>	0300 1.26
	0758 0.53		0905 0.62
TH	1425 1.44	FR	1546 1.53
●	2018 0.75		2227 0.72
<b>8</b>	0219 1.45	<b>23</b>	0406 1.19
	0845 0.53		0954 0.65
FR	1520 1.53	SA	1640 1.57
	2132 0.70		2332 0.66
<b>9</b>	0327 1.40	<b>24</b>	0510 1.18
	0937 0.52		1044 0.66
SA	1615 1.64	SU	1730 1.61
	2245 0.61		
<b>10</b>	0434 1.38	<b>25</b>	0024 0.60
	1030 0.51		0605 1.19
SU	1711 1.77	MO	1131 0.65
	2352 0.49		1815 1.66
<b>11</b>	0541 1.38	<b>26</b>	0106 0.54
	1125 0.49		0652 1.23
MO	1805 1.89	TU	1216 0.63
			1856 1.71
<b>12</b>	0052 0.36	<b>27</b>	0144 0.48
	0643 1.40		0732 1.26
TU	1220 0.47	WE	1259 0.60
	1900 2.00		1934 1.75
<b>13</b>	0148 0.26	<b>28</b>	0218 0.44
	0742 1.42		0811 1.29
WE	1315 0.45	TH	1338 0.57
	1954 2.08		2012 1.78
<b>14</b>	0242 0.19	<b>29</b>	0253 0.41
	0838 1.44		0846 1.31
TH	1411 0.43	FR	1415 0.55
○	2047 2.11	●	2047 1.79
<b>15</b>	0334 0.17	<b>30</b>	0327 0.40
	0932 1.45		0922 1.32
FR	1506 0.43	SA	1454 0.54
	2140 2.09		2123 1.79
		<b>31</b>	0400 0.39
			0959 1.34
			SU 1533 0.55
			2159 1.75

### Please support our club sponsors –

#### Helly Hansen

Helly Hansen is a company manufacturing professional grade gear. It offers technical sailing and performance ski apparel, as well as premium workwear. The Company provides clothing and footwear for sailing, hiking and other outdoor activities.

#### Sydney 4WD

Based in Thornleigh, Sydney 4WD have been producing top of the line vehicle builds with thousands of retail, trade and fleet vehicles passing through their workshop every year. Specializing in super high-quality Ironman 4x4 “fit for purpose” builds and a massive range of products, brands, and services.

#### Yachtworx

Yachtworx Australia offers a complete range of services to anything and everything that floats! Located at Bobbin Head and at White Bay Wharf 6, Yachtworx provides repairs, refits, restorations, modifications and project management on all types of vessels ranging from classic wooden race boats to luxury fibreglass craft and commercial vessels.

#### Joe Walsh Rigging

Joe Walsh Rigging specialises in all marine and architectural rigging, masts and spar fabrication, repair, painting, all rigging requirements, furling systems and AYF Rig Insurance Inspections. Located at Woolwich Marina.

#### Doyle-McDiarmid Sails Sydney

Doyle-McDiarmid Sails is located in Gladeville. Services include an in-house design team, laser cutter and modern machinery for new sails, repairs, covers and supplies ongoing service.

#### Oatley Wines

Robert Oatley Wines celebrates the memory of Bob Oatley through a trio of labels: the maritime-influenced Signature Series, the specific vineyard focused Finisterre, and the best of the best barrels under The Pennant label. They focus on wines from Margaret River and McLaren Vale.

#### Zjoosh

Located in Lane Cove, Zjoosh is an unique Australian lifestyle brand. It specialises in "the finishing touches". From its early beginnings as a fashion jewellery and accessories brand, Zjoosh has broadened to homeware and gifts.

What do you call a sail with only two corners? ..... “I haven’t got a clew!”