

GFS Skippers Briefing 2022



**P.O. Box 5092, GREENWICH NSW 2065
Clubhouse: Bay Street Wharf, GREENWICH
Phone and Fax: 9436 1901**

Lifejacket Wear Rules

Tenders

Boating activity/ Vessel type	Enclosed waters Lifejacket requirements
Children under 12 years of age	Level 50S or greater: <ul style="list-style-type: none">• At all times on a vessel less than 4.8m• When in an open area of a vessel less than 8m that is underway.
On all boats less than 4.8m (unless specified)	Level 50S or greater at all times when: <ul style="list-style-type: none">• Boating between sunset and sunrise• Boating on alpine waters• Boating alone (without an accompanying person 12 years of age or more).



WEAR A LIFEJACKET
DON'T RISK YOUR LIFE

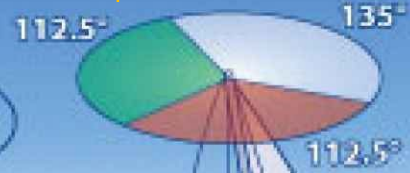
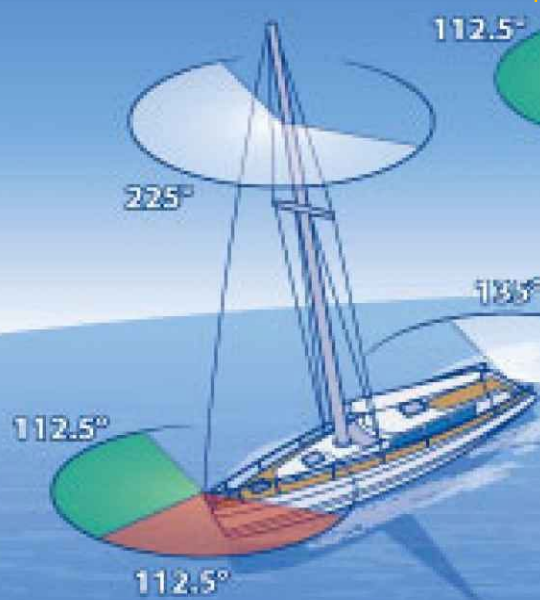


Navigation Lights



Under sail

Under motor



Optional extra



At anchor



- Tricolour not recommended
- Not compliant for vessels under motor - steaming light must be a minimum of 1m above sidelights (COLREGS Annex 1 Rule 2 (d)(h))

Use a torch to illuminate sails in busy areas or when another vessel seen approaching



Racing Rules

1. Interaction with other competing vessels:

- Australian Sailing Racing Rules of Sailing

2. Interaction with non competing vessels:

- International Regulations for the Prevention of Collisions at Sea 1972 (COLREGS).



COLREGS Rule 9 – Narrow Channels

- **(b)**
- A vessel of less than 20 metres in length or a sailing vessel shall not impede the passage of a vessel which can safely navigate only within a narrow channel or fairway.
 - i.e. **KEEP CLEAR OF LARGE VESSELS!**

STEER CLEAR



of Big Ships and Ferries Event Condition

Before heading out check the Daily Vessel Movements on the Sydney Ports website: www.sydneyports.com.au

- ✓ Listen to the safety broadcast from Sydney Ports' 24/7 Vessel Traffic Service (VTS) centre on VHF Channel 13 for details of vessel movements
- ✓ Monitor VHF Channel 13 for position reports from vessels
- ✓ Always keep a lookout for seagoing ships and **STEER CLEAR** of them

- ✗ **DO NOT** pass between the escort vessel and the seagoing ship
- ✗ **DO NOT** pass within 30 metres of the side or stern of a seagoing ship
- ✗ **DO NOT** anchor in a channel or fairway
- ✗ **DO NOT** block a channel or fairway

24 HOUR HARBOUR OPERATIONS
VHF CHANNEL 13

Do not pass between escort vessel and seagoing ship



Escort vessel identified by Red and Blue Flashing lights.

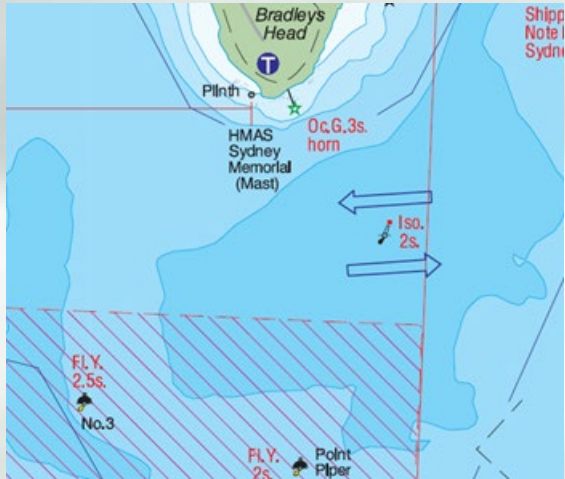


1. Big ship

- Keep **500m** from bow,
- **30m** from sides & stern
- Do not pass between pilot vessel and ship

2. Ferries

- Keep **200m** from bow,
- **30m** from sides & stern



Leave to Port

...or if that is not practicable participants must maintain a safe distance from other vessels.



ADDITIONAL CONDITIONS: SAILING EVENTS

Do not navigate between moorings whilst competing



Incident Reporting

- **All incidents**

- Advise club Sailing Officer

- **Significant incidents**

- (i.e. incident has resulted in death or injury to a person resulting in admittance to hospital; significant damage to a vessel (>10% value) or other property; damage or risk to the environment)
- Advise RMS
Complete Vessel Incident Report Form

<http://www.rms.nsw.gov.au/maritime/safety-rules/incidents-emergencies/incident-reporting.html>

RADIOS

Ch 72

- Mandated to have a radio
- Please leave the radio on during racing
- We have had several incidents where boats have requested assistance and the response from GFS Fleet has been silence.
- Downharbour: due to geography the Clubhouse cannot always hear transmissions from club vessels. We need to look out for each other.
- The course to be sailed can be changed by the starter up to the warning signal of each separate Division. This may result in different divisions sailing different courses.

Sailing Instructions

RRS 46

- All yachts must lodge a crew list on TopYacht to nominate the persons on board (POB) for each race in which the yacht competes. The list must include Australian Sailing numbers for each person.
- From 1st January 2022, all persons on board a boat while racing shall be members of a Club affiliated to Australian Sailing and have an Australian Sailing number, or hold a valid Sail Pass, or if an international competitor, be a member of club affiliated to a World Sailing recognised Member National Authority.
- RRS Rule 46 PERSON IN CHARGE
- A boat shall have on board a person in charge designated by the member or organization that entered the boat. See rule 75.
- Chris Gaskell


Top Yacht POB lists

- Initial set up is via the TopYacht entry link – <https://topyacht.com.au/db/kb2/1583>
- Once you have added a crew list you can update your crew from the following link – <http://tymob.net.au/mycrew.php?evid=1583&sn=????> **????**
is your sail number
- **Crew lists are deleted at midnight every Monday. If you enter a crew list before then for the following week's races this will also be deleted.**

TWILIGHT STARTS

Outside Starts

- Course Signals.
- Twilight Courses – Clubhouse start or if conditions warrant Launch Start (Code Flag 'Q' flown on the clubhouse flag mast)

GFS Sailing Instruction	Code Flags and Pennants	Appearance	Meaning	Possible sound signal
8	Q		Start is from the club launch	***

- We will try to advise on the Web/Facebook early in day or day before. However, there maybe a late call.

- Nick Murphy

Pre-season Briefing
GFS Twilight Race Series 2022 / 2023
Nick Murphy – Twilight Captain

- **Outside starts will be trialled**
 - Typically light SE winds, large fleets
 - Start line to be set outside Humbug.
 - Check the flags
 - Check the website – but the flags make the rule
 - When starting from the club launch in TWILIGHT RACES only, there will be no flag signals. Starts for each division will rely on sound signals and radio calls from the starters.

Pre-season Briefing
GFS Twilight Race Series 2022 / 2023
Nick Murphy – Twilight Captain

- **Course setting**

- Watch the course boards for late changes before the start
- Make sure you have the current course sheet on hand
- Keep radio on
- Radios compulsory – Sydney 4X4 is a GME dealer and a club sponsor

- **Cancellation notices**

- 24 hours in advance when possible
- Can cancel as late as 16:30 on the day
- But can cancel last minute due to sudden changes especially lightning

-
- **Change in division allocations**
 - Past scratch results
 - Excessive numbers in some divisions
 - Check your division!
 - Buy a new flag if required



Pre-season Briefing
GFS Twilight Race Series 2022 / 2023
Nick Murphy – Twilight Captain

- **POB lists**

- Compulsory
- Follow the directions on the club website

- **TWILIGHT DINNERS ARE BACK. ALL MEMBERS ENCOURAGED TO SUPPORT THE CLUB**

- **CATERING WILL COMMENCE FIRST RACE.**

- Holly Charalombous

22. Protests

Mike Murphy

- A Red Flag or Code Flag B will be recognised as a protest flag. The flag must be displayed immediately at the time of the incident accompanied by the hail 'protest'.
- The starter must be notified of the protest on completion of the race in which the protest occurred.
- All protests shall be made in writing, addressed to the Protest Convener and lodged –
 - at the club within one hour of the finish of the last boat in that division on the day of the event in which the protest arises.
 - before 10am on the day after the race by email (to the GFS Protest Convener). Receipt of protests delivered by email will be acknowledged by the Protest Convener within 24 hours.

22 PROTESTS

Mike Murphy

- Appendix T of the Racing Rules of Sailing applies to GFS races.
- Rule 44.1 provides that "some other penalty" for the breach of a rule may be specified. For GFS races the
- one and two turns penalties apply and in addition, if at an Arbitration pursuant to Appendix T, all skippers that
- are parties to the protest agree on an alternate penalty, and the arbitrator is of the opinion that such penalty
- will not cause material detriment to other boats, that penalty will apply. Such an agreed penalty may be an
- acknowledgement that a rule was broken, or some other penalty agreed by the skippers.

SAFETY AUDITS

Audits now complete except in exceptional circumstances

- All yachts competing in GFS races must have current marine insurance which includes racing cover appropriate to the event. Written Proof of Insurance (POI) must be supplied and to do this a certificate of currency from the insurer showing either comprehensive insurance with racing cover or third-party property insurance with racing cover is required listing a minimum of \$10,000,000 third party liability.
- If the policy is changed or renewed during the season it is the owner's responsibility to lodge a new Proof of Insurance with the Club prior to racing in the first event after the expiry of the old policy.
- All yachts competing in GFS races are required to have lodged a current season audited Special Regulations Equipment Compliance Form to a minimum YA Special Regulations: Part 1 – Category 7 – Short races in sheltered waters, in daylight hours and with effective rescue capability, with the Club or hold and produce a current audited Special Regulations Equipment Compliance Form from another club.
- RRS Rule 78.2 will apply to a yacht unable to deliver this form by the required time.