

A scenic view of the Greenwich skyline at sunset. The sky is a mix of orange, yellow, and grey clouds. The city's skyscrapers are silhouetted against the bright light, with some windows reflecting the sun. In the foreground, the water is dark with many sailboats of various sizes and colors (white, yellow, black) scattered across it. A small white motorboat is visible on the right side of the water.

Greenwich Flying Squadron Compulsory Skippers Briefing 17 September 2025

Agenda (7.30pm - 9.30pm)

Introduction	Leigh McLaughlin	5 mins
Maritime Briefing	Christine McKenna, Drew Jones	15 mins
Duty of Care	Leigh McLaughlin	5 mins
Safety	Roger Gee & Leigh McLaughlin	15 mins
Racing	Phil Hare	15 mins
Twilights	Ken Gibson	15 mins
Women's Helm	Leigh McLaughlin	10 mins

Duty of Care

**As Skippers,
we have a legal
and ethical *duty
of care* to our
crew and fellow
sailors**

- Put safety above all other considerations
- RRS Fundamental Rule 3:
“The responsibility for a boat’s decision to participate in a race or continue racing is hers alone”
- Every time you race consider:
 - your capability
 - your crew’s capability
 - your vessel
 - the conditions

Spirit of Racing

- Know the rules and abide by them
- If you infringe, take your penalty
- Be considerate of others
- Leave a good margin for error,
appropriate to the conditions
- Be friendly – no abuse
- Help others in need

Membership and Crew Matching

- *Please* renew your membership and ask your regular crew to rejoin
- Guests can sail with you, but please ask them to apply for a **Sail Pass** (free).
- After 3 times, they should become members of the club. Note that we rely on membership fees to have the resources to keep the club going
- Chris Gaskell, our membership secretary, can help
- Also talk with Chris about Crew Matching

Agenda (7.30pm - 9.30pm)

Introduction	Leigh McLaughlin	5 mins
Maritime Briefing	Christine McKenna, Drew Jones	15 mins
Duty of Care	Leigh McLaughlin	5 mins
Safety	Roger Gee & Leigh McLaughlin	15 mins
Racing	Phil Hare	15 mins
Twilights	Ken Gibson	15 mins
Women's Helm	Leigh McLaughlin	10 mins

RISK MANAGEMENT

- 1. EXPERIENCE COUNTS**
- 2. ANTICIPATION**
- 3. AVOID IF POSSIBLE**
- 4. MINIMISE RISK**
- 5. EMERGENCIES**
- 6. TRAINING**

***EXPERIENCE
COUNTS***

- **Example**
- **Listen to others**
- **Learn from others**

ANTICIPATION

- **Keep your wits about you**
- **Use your crew**
- **Encourage them to speak up**

***AVOID IF
POSSIBLE***

- Don't sail if the weather is beyond your capability or your crew's capability.
- Discuss it with your crew
- The skipper is **responsible**

MINIMIZE RISK

- **Stay clear of other boats in strong winds**
- **Give a crew member the responsibility to watch for other boats at the start**
- **On the start consider starting slightly behind other boats**
- **Consider reefing**

EMERGENCIES

- **Training**
- **Expertise of crew**
- **Safety Card**
- **Use 000 not the Club**

TRAINING

- **Man overboard is a serious risk to life**
- **Skipper defines man overboard procedure**
- **Make Crew aware of process**
- **Conduct a man overboard drill on a regular basis**

Incident Reporting

What incidents are reportable from GFS sailing events?

- Death
- Person overboard
- Serious injury requiring medical treatment
- Collision causing vessel damage: the lesser of \$5,000 or 10% of vessel value
- Environmental damage (eg. fuel or blackwater discharge to harbour)
- Damage to harbour infrastructure (eg. collision with navigation mark or jetty)

Incident Reporting

How do I report it?

- File a GFS Incident Report form within 24 hours of the incident (on website)
- If it meets the threshold, the formal Maritime Form must be lodged by the skipper within 24 hours of the incident.
- Otherwise, only the GFS 'Yellow' Incident Form will need to be lodged for club records.

Incident Reporting (Leigh)

Then what?

- A Committee Member will contact you within 24 hours to discuss the incident and understand any issues that may assist the club to improve safety practices.
- A copy of your report will be held by the club for its records.
- The Safety Committee will review the incident reports and consider training or communication to highlight the learnings in similar situations.

Agenda (7.30pm - 9.30pm)

Introduction	Leigh McLaughlin	5 mins
Maritime Briefing	Christine McKenna, Drew Jones	15 mins
Duty of Care	Leigh McLaughlin	5 mins
Safety	Roger Gee & Leigh McLaughlin	15 mins
Racing	Phil Hare	15 mins
Twilights	Ken Gibson	15 mins
Women's Helm	Leigh McLaughlin	10 mins

Racing – Phil Hare

- Sailing Program
- Sail Sys
- Sailing Instructions
- Handicaps, Results
- Website - check regularly for updates and vital information

Please check the GFS Website regularly -
<https://gfs.org.au/>



[HOME](#) | [CLUB INFORMATION](#) | [CONTACTS](#) | [SAILING](#) | [COME SAIL WITH US](#) | [LINKS](#) | [HUMBUG](#) | [SPONSORS](#)

ENTERING DIFFERENT SERIES

10/09/2025

It seems each Series you enter in SailSys, you will need to attach your Insurance and Equipment Audit from your '**File Library**' (where it is stored in SailSys).

Click on the **Edit** button

Search

SailPASS



Sailing – Yacht Racing Information

Information
relevant to
racing is on
the website

RRS 2025 – 2028

[RRS 25 – 28](#)

GFS SAILING PROGRAM – YACHT DIVISIONS

Open [Greenwich Flying Squadron Program 2025-2026](#)

Download [Greenwich Flying Squadron Program 2025-2026](#)

SAILING INSTRUCTIONS

Download [GFS Sailing Instructions 2025 – 2026](#)

GFS SAFETY CARD

[GFS-Safety-Card](#)

EQUIPMENT AUDIT FORM

[Equipment Audit Form 25 – 28](#)

SATURDAY COURSE SHEETS

Open [GFS Saturday Courses-2025 – 2026](#)

Download [GFS Saturday Courses-2025 – 2026](#)

TWILIGHT COURSE SHEETS

Open [GFS Twilight Courses- 2025 -2026](#)

Download [GFS Twilight Courses- 2025 -2026](#)

SENS EXEMPTION ORDER CONDITIONS

[SENS Gazette Conditions](#)

VESSEL INCIDENT REPORT

[45065752-vessel-incident-report](#)

Skipper's Briefing – Transcript

Racing Rules (25-28)

Race Program

Sailing Instructions

Safety Card

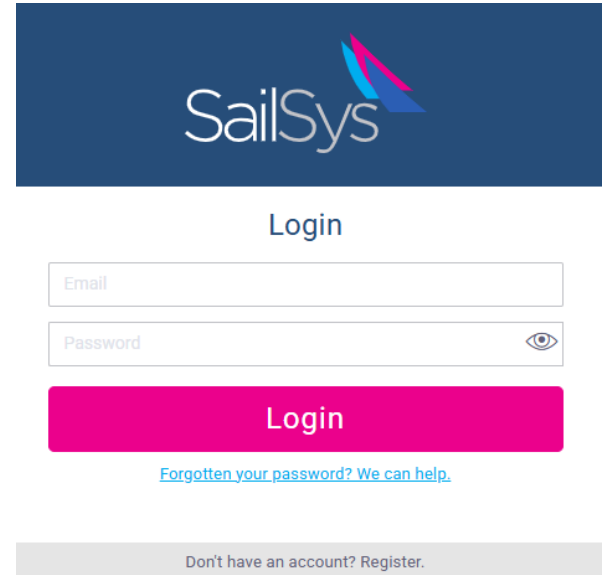
Safety Audit Form

Course Sheets

Incident Report

SailSys - <https://www.sailsys.com.au/>

1. Register as an individual
 2. Find your boat – there is already a profile for it. Allocate yourself as admin for your boat
 3. Upload your *Insurance & Equipment Audit* documents to the **File Library** in your boat profile
 4. Enter each GFS series ***separately***
 5. For each series, you then need to ***link*** your compliance information to the **File Library**
- Instructions are on the GFS website



The screenshot shows the SailSys login interface. At the top is the SailSys logo on a dark blue background. Below it is a 'Login' link. There are two input fields: 'Email' and 'Password'. The 'Password' field has a toggle icon (an eye) to its right. Below the fields is a large pink 'Login' button. Underneath the button is a link: 'Forgotten your password? We can help.' At the bottom of the form area is a grey bar with the text 'Don't have an account? Register.'

<https://app.sailsys.com.au/club/14/entry?tab=entry>

Sailing Instructions - changes

CHANGES:

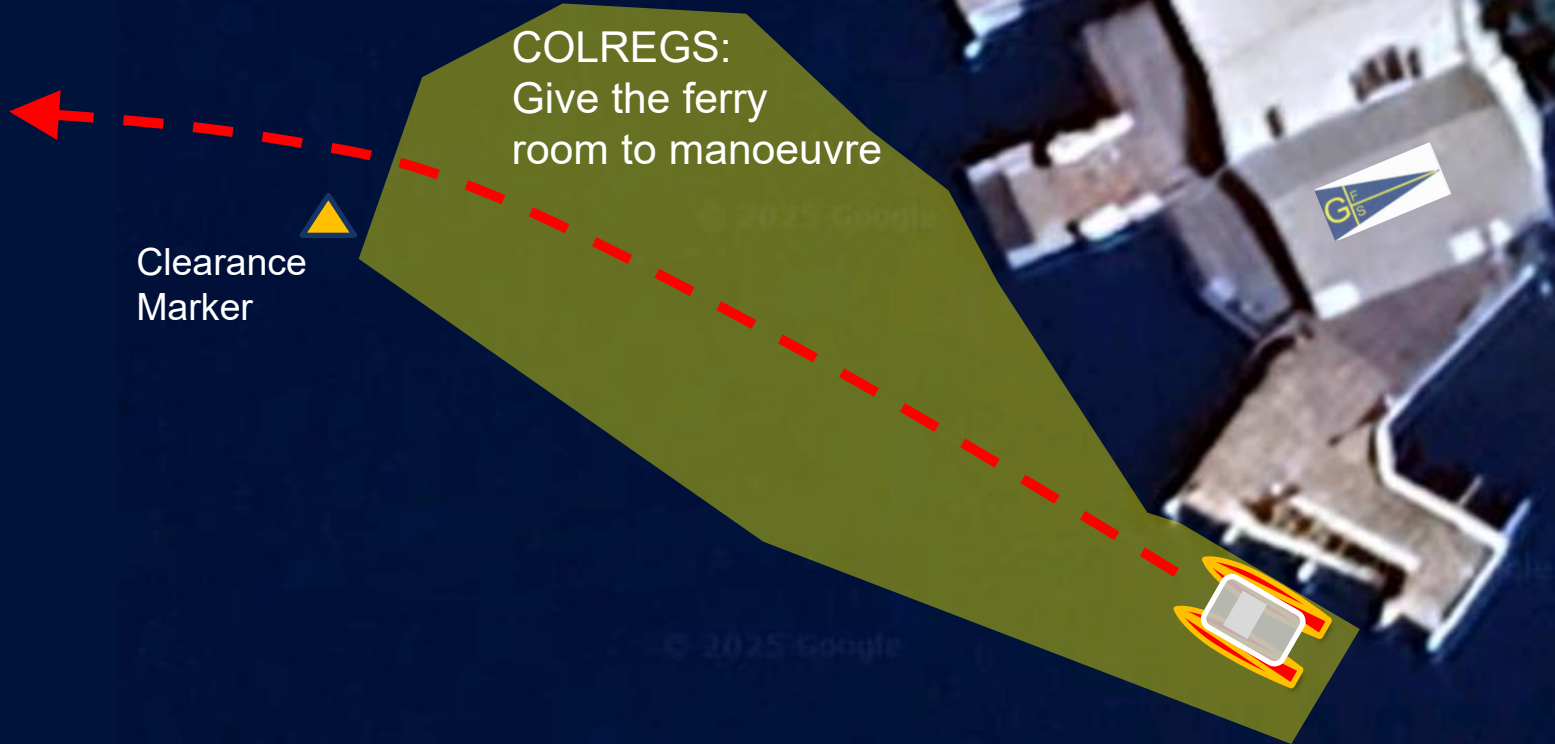
*See Sailing – Yacht
Racing Information
– Sailing Instructions*

*These support and
modify the current
2025 – 2028 Racing
Rules of Sailing*

- Ferry exclusion zone SI 11 h
- Prohibited areas SI 25 n (i) and n (x)
- Handicap System SI 23 - SailSys
- Use of engine SI 25 p
- Twilight start line SI 09 & Map SI p24
- Twilight Finish Line SI 20 f and g
- Twilight Shortened Course SI 14 b

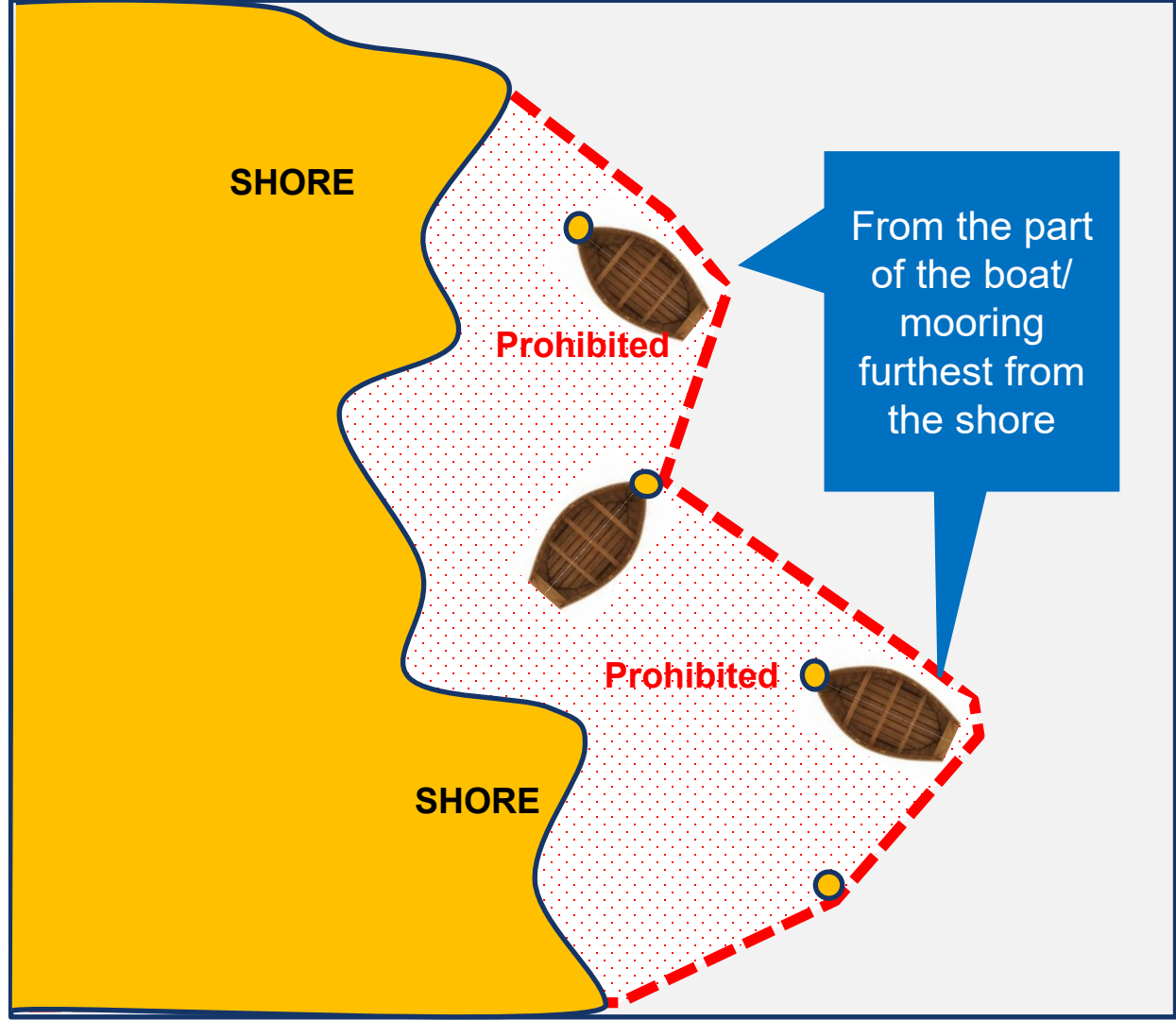
Sailing Instruction SI 11 h

No loading/ unloading at club pontoon from whilst ferry is at the vicinity of the wharf



Sailing Instruction 25n (i)

Do not
sail (race)
through
Moorings



Sailing Instruction 25 n (x)

New
prohibited
Sailing Area



Agenda (7.30pm - 9.30pm)

Introduction	Leigh McLaughlin	5 mins
Maritime Briefing	Christine McKenna, Drew Jones	15 mins
Duty of Care	Leigh McLaughlin	5 mins
Safety	Roger Gee & Leigh McLaughlin	15 mins
Racing	Phil Hare	
Twilights	Ken Gibson	15 mins
Women's Helm	Leigh McLaughlin	10 minsh

Twilight Captain - Ken Gibson

1. Are you ready to race?
2. Changes for 25-26 season
3. Duty Roster
4. The magic of GFS twilights - keeping the right spirit

twilightcaptain@gfs.org.au

0407 906 085

Are you ready to Race?

- ✓ Paid Membership
- ✓ SailSYS boat and series entry Completed
- ✓ Crew signed up and ready to go

Are you ready to Race?



Paid Membership



SailSYS entry
Completed



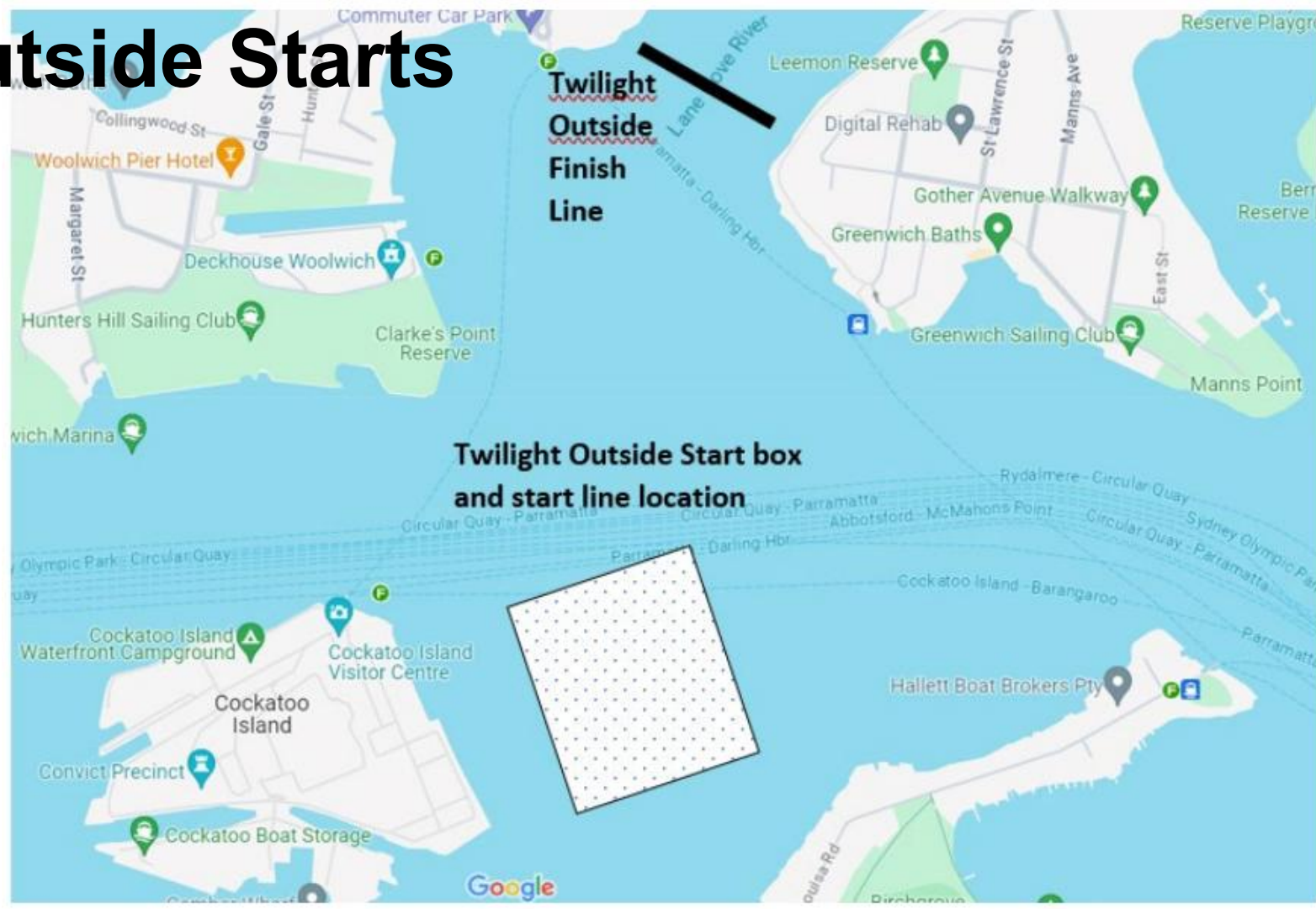
Crew signed up and
ready to go

1. Enter Boat profile in SailSys
2. Upload Safety & Insurance to Boat library
3. Enter Twilight Series
4. Link uploaded safety and insurance to the series

25-26 twilight season

- SailSys
 - Results should be easier/faster to process
 - Handicaps will have changed, but are based on last year's data, and relativities have not changed
- Racing
 - Changed outside start line (first and last 4 races)
 - New Shortened Course option for Club starts
 - Simplified start sequence (reminder)
 - New SI for the south side of Cockatoo
- Other
 - New club rule regarding Greenwich ferry

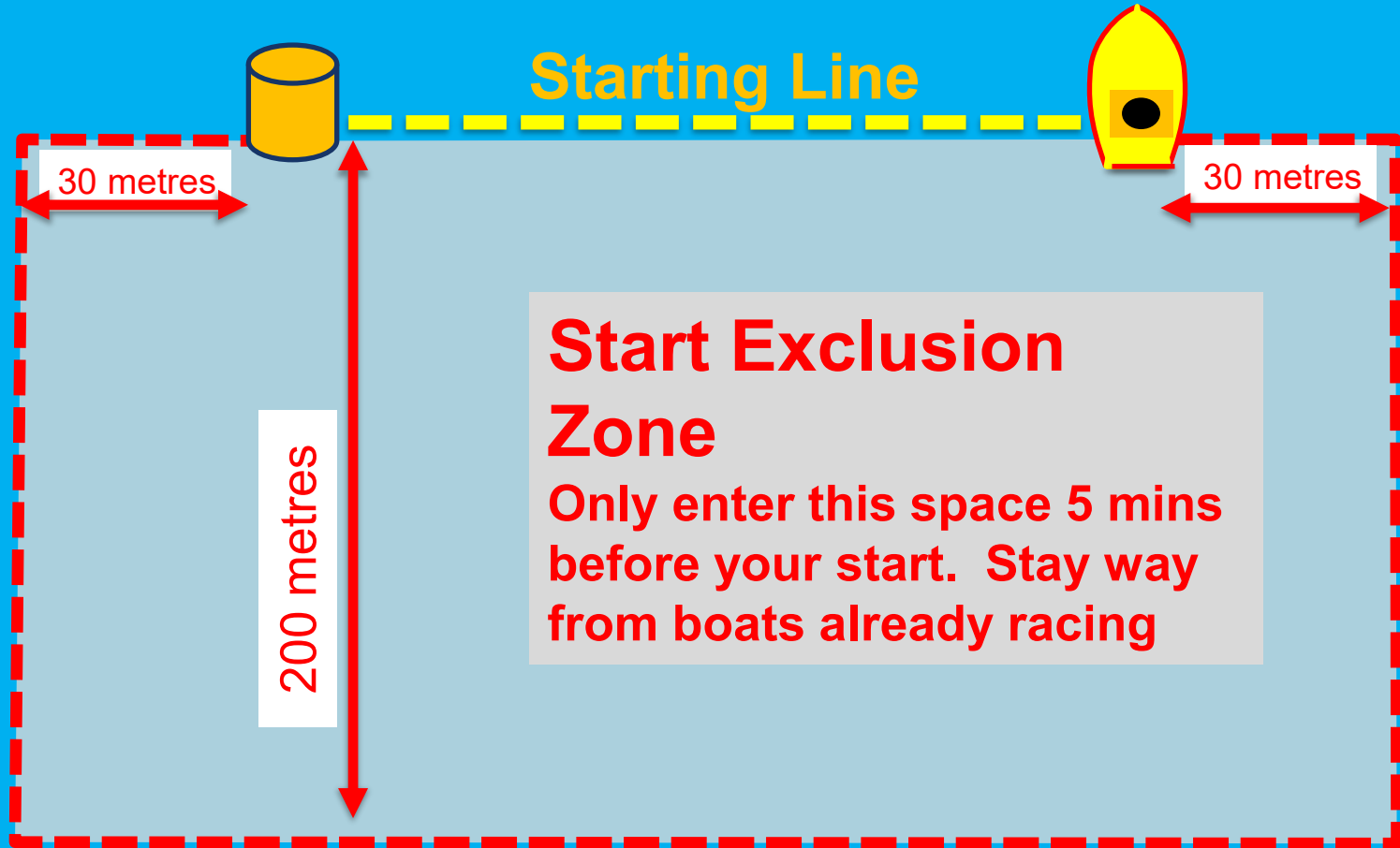
Outside Starts



Outside Starts

- There is only 1 outside start line – east of Cockatoo
- It will be further from Cockatoo than last year to provide a bigger starting ‘box’
- Mostly, the first mark will be east of the start line.
However, we reserve the right to start the fleet to head west (e.g. in a westerly wind)
- The start line will be at the same place each week.
We are NOT attempting to lay a ‘fair’ upwind start line
- In all cases, the start boat will be on the starboard end of the start line.

OUTSIDE START EXCLUSION ZONE



Shortened Course

- Only for races that start and finish at the club
- When a course is shortened, it is for ALL divisions
- Shortened Course finish line: southern end of Humbug (same as the Outside race finish)
- Will be notified by:
 1. VHF message
 2. SMS text message to all Skippers;
 3. Code 'S' Flag flown from the Club Launch

Simplified start sequence

TIME	FLAG	SOUND	VHF
5 min	Division Flag Raised	Horn	10 Second countdown (e.g. to previous start)
4 min			10 Second countdown to 4 minutes
1 min			10 Second countdown to 1 minute
Start	Division Flag Lowered Next Division Flag Raised	Horn	10 Second countdown to start 'Clear Start' / individual recall Next division announced

**No P or I
flag at 4 min
or 1 min**

**No Horn at
4 min or 1
min**

Duty Roster

WHY?

- Ensures Clubhouse is clean, tidy and locked up
- We are a volunteer-based club – this shares the load and builds community

WHAT?

- A Duty Crew Job's List will be sent out with the Roster and placed on the website.

HOW?

- Roster will be emailed soon. If you can't make the date you've been rostered on, **it's your responsibility to swap with someone else.**
- Ask agreement of all present to share contact details to allow swaps.
- Once you've confirmed a swap, advise Ken Gibson of the revised dates: twilightcaptain@gfs.org.au

Agenda (7.30pm - 9.30pm)

Introduction	Leigh McLaughlin	5 mins
Maritime Briefing	Christine McKenna, Drew Jones	15 mins
Duty of Care	Leigh McLaughlin	5 mins
Safety	Roger Gee & Leigh McLaughlin	15 mins
Racing	Phil Hare	15 mins
Twilights	Ken Gibson	15 mins
Women's Helm	Leigh McLaughlin	10 mins



GFS
WOMEN
WOMEN'S HELM SERIES

Women's Helm – Leigh McLaughlin



- Five WH races, last Wed of month except Dec
- Held simultaneously with Twilights, point scores separately awarded
- WH is for the best weighted handicap result in the combined divisions in a series of five races held within the Twilight Series
- Pre-Season Practice Race 18 October
- Woman to be on helm for at least 75% of race
- Risk Management
- Mentors and Prizes

A scenic view of the Greenwich skyline at sunset. The sky is a mix of orange, yellow, and grey clouds. The water in the foreground is dark with many sailboats of various sizes and colors (white, yellow, black) scattered across it. The city skyline in the background features numerous tall buildings, some with cranes, and a few construction cranes are visible on the right side. The overall atmosphere is calm and picturesque.

Greenwich Flying Squadron Safety Briefing 17 September 2025 Questions