

HUMBUG

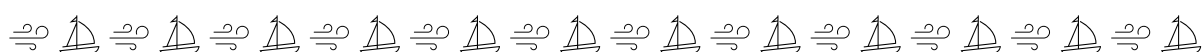
Greenwich Flying Squadron



May 2026



Cover photo by Holly May.



Contents

2. Contents & GFS Team
3. Important dates
4. Commodore's Column
5. Twilights
7. Saturday Sailing
8. Social Secretary
10. Junior Sailing
11. Women's Helm
12. Safety Update
13. Memorial sites
14. Sail trim when the wind blows
16. GFS Sponsors
17. Seasons Results

GFS Team

Patron: Harvey Porter

Commodore: Stephen Bradley

Vice Commodore: Leigh McLaughlin

Club Secretary/ Public Officer: James Kearney

Treasurer: Richard Grundy

Membership Secretary: Chris Gaskell

Rear Commodore

Saturday Sailing, Sailing Secretary: Phil Hare

Rear Commodore Junior Sailing: Jason Anderson

Rear Commodore Twilight Sailing: Ken Gibson

Social Secretary: Glenda Cameron-Strange

Member Protection Officer: Glenda Cameron-Strange

Humbug Lite Editor: Phil Hare

Humbug Editor: Tim Fletcher

Clubhouse Manager: Rob Hale

Protests Convenor/Licensee: Michael Murphy

Safety Officer: Roger Gee

Handicapper: Bram Penberthy

Laser Captain: Michael Wise

Webmaster: Dion Weston

2026 Sailing Season Dates

Year	Month	Day	Date	Event
2026	May	Sunday	31	West Harbour Winter Series Race 1*
	June	Saturday	6	Prize presentations from 3 PM
		Wednesday	10	Ropes workshop 7 PM at the clubhouse
		Sunday	14	West Harbour Winter Series Race 2
		Sunday	28	West Harbour Winter Series Race 3
	July	Tuesday	14	AGM 7.30 PM at the clubhouse
		Wednesday	8	Coastal Cruising 7 PM at the clubhouse
		Sunday	12	West Harbour Winter Series Race 4
		Sunday	26	West Harbour Winter Series Race 5
	August	Sunday	9	West Harbour Winter Series Race 6
		Wednesday	12	First aid 7 PM at the clubhouse
	October	Sunday	23	West Harbour Winter Series Race 7
		Sunday	25	Balmain Regatta

* Entry required minimum of 2 hours before race 1. (Though not recommended to leave that late 😊)

Following several successful recent turnouts, we are launching a new lineup of Wednesday events this winter:

Topic	Topics covered etc.
Ropes!	Practical session to help people learn splicing (dyneema, 3 strand), whipping, knots, rope handling).
Coastal Cruising	Experienced sailors discuss practical aspects of how to prepare and sail a boat to Pittwater and beyond
Medical	How to prepare for and deal with medical emergencies on a boat. Identify the most common injuries on a boat and how to deal with them. CPR training; defib training

Format: arrive at 7:00pm for drinks, then the session runs from 7:30pm for no longer than 2 hours; club provides the drinks and nibbles. 🌊🚤

Commodore's Column

Steve Bradley: Commodore

Greenwich Flying Squadron is a vibrant club located in a small building on the edge of one of the most beautiful harbours in the world. While our physical facilities are modest our members and volunteers make this a very special club to be part of. I feel very privileged to be part of such a supportive community and keep repeating the phrase 'How lucky are we?'

As another Summer of racing draws to a close, I would like to reflect on the last year. We have experienced some glorious sailing conditions and some where the weather was not so kind. Regardless we enjoyed the sailing and each other's company. I am pleased to say that the Club is in good shape and enjoyed by nearly 500 members.

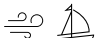
We increased our focus on safety under the leadership of Roger Gee and learnt more about the causes of incidents and accidents on the water. What became clear was that the biggest contributing factor was the lack of skills required when conditions became more difficult. This led us to run a number of skills development sessions, which were very well received, and be assured there will be more of these next year.

The Women's Helm series was bigger and better than last year with 21 boats competing. I am confident that under the great leadership of Leigh McLaughlin next year will be even better.

Jason Andersen and Janelle Parsons lead a great Juniors program and made good use of the Optitackers that were purchased last year. These boats make life simpler for all involved in junior sailing and I thank everyone who contributed to their purchase.

Weekend racing continues to have small numbers and this is something that we would like to increase. The harbour is not very busy and the smaller numbers make for lots of room and enjoyable racing. If you have not given this a try already I suggest you give it a go next season.

The Wednesday evening twilight races proved very popular again with 76 boats registered for the racing. A number of improvements were introduced by Ken Gibson and the team and they were universally well received. The atmosphere at the post race BBQ was very special, even on the wet nights when everyone squeezed into the clubhouse.

I want to extend my sincere thanks to everyone involved for their hard work and unwavering commitment. I look forward to connecting with you at the clubhouse and continuing to enjoy this truly great club that we are all proud to be a part of. 

2025-6 TWILIGHTS

Time to Reflect



THE SEASON THAT WAS

Another year of delightful twilight racing! 76 boats entered, and often we'd have up to 60 boats racing in a season that offered up every type of weather. Perhaps most importantly, it is wonderful to see so many newer members participating, with a special mention to those who sailed in the Women's Helm series, and their mentors.

WHAT WENT WELL

Thanks to all of you (99) who completed our survey. 90% of you said you'd 'strongly recommend' GFS twilights. Your positive feedback included:

- Outside starts and finishes – you'd like more
- Shortened courses – you appreciate them
- The improved communication – both the Twilight Weekly and the excellent work of our fabulous starters on the radio and text messages
- The Women's Helm series – much improved
- BBQs – better scores on salads and vegetarian options (but see other comments below)
- Safety – improved (59% 'very safe' vs 48% last year).
- Skill improvement sessions (SailSafe, SailFast, Rules Night) were appreciated

"Twilights feel safe, well organised and fun. I'm loving it. Big thanks to the course setters, the starting crew and everyone else involved. There is a very positive energy about the place."

"I liked the new club table - we had a couple of new crewies join us at times and they enjoyed meeting others. The racing was fun and I felt it was safer and more respectful than previous seasons. The new events were terrific. I would soak up more of those!"

WHERE WE CAN IMPROVE

"The handicap system needs faster and bigger adjustments"

There were a wide range of individual suggestions, but the following themes came through:

- The handicaps on SailSys was criticised as too slow to adjust
- Community – We value how friendly the club is, but we can still do much better
- BBQs – Tables are often jammed together and reserved. For those who arrive late, it can be hard to find a table and food runs out.

"As much as the atmosphere is vibrant and location gorgeous, it's quite isolating for the new people to the club and is difficult for them to meet other club members esp if they are a little shy."



"Could 2 x boats share a table and when the crew is large, then split to always include space at the table for another boat?"

WHAT WE WILL DO NEXT

- SAILSYS – We now have the capacity to adjust the settings on SailSYS handicapping to allow faster adjustment. We will review this over winter.
- SHORTENED COURSES – We need to continue to develop our processes for doing it – it is very tricky when you have 7 divisions and 3 unique courses!
- OUTSIDE STARTS – we will consider greater use of outside starts when conditions are right
- BBQs – How can we better cater for late arrivals? How can we improve sharing, reduce crowding and actively strengthen the sense of community in the club?

Please feel free to contact Steve Bradley, Leigh Mclaughlin or Ken Gibson if you've more suggestions or would be willing to help us with some of these new initiatives. Also, if you'd like to see the complete survey results, please contact Steve. 🌊 ⚓



On the way home, Wednesday April 1st Photo: Ken Gibson

Saturday Sailing

Phil Hare, Sailing Secretary

Saturday sailing continued to be competitive despite low numbers of competitors and in some instances less than ideal wind and weather conditions. The monthly Down Harbour race attracted a few more boats and gives a nice long spinnaker run.



*Etchells photos:
Mark Palmer*



*Bonus Saturday show
Photo: Andrew Nelson*

Generally, Division 1 saw the battle between the Etchells - TISM, Tonic. Adrenaline, Chloe, Whiskey Tango Foxtrot and later Another One with the yachts Hasta La Vista and On Y Va.

Division 2 was hard fought between Joka and Paca with occasional interference from Flair. Other irregular appearances from Jester (J70) until it was sold, Barubi and Restless added to the fleet. The race results were always close as were the final series point scores.

Special thanks to the starters Scarlet Hall and Eve Syratovicz they were excellent and a special mention and thanks to Jim Lelliott for mentoring the starters, driving the start boat and laying marks.

Hopefully we can convince more club members to sail on Saturdays next season. There are advantages sunshine, steady wind (usually) and small fleets to negotiate on the water. As well there is the opportunity for post-race discussion back at the club after the race on 'the Deck of Knowledge'.

Enjoy the off season or best of luck in whichever winter series you sail. ☺ ⚓

A Word from the Social Secretary

Glenda Cameron-Strange, Social Secretary

That's a wrap for another full and fun Twilight season!

Despite the weather trying to test our patience a couple of times, we only lost two races all season due to bad conditions — not a bad effort. Overall, it has been a busy, social and successful season, both on and off the water.

The return of the outside starts proved to be a real winner again, helping to keep things moving smoothly and adding to the excitement of racing. It has also been fantastic to see increased numbers in Women's Helming this season, with more women stepping confidently into skipper roles and enjoying the competition.

Away from racing, the club has continued to grow its strong community spirit. Our Information Evening on Long Distance Sailing by Ken Gibson, Marianne Urth and Alex Holtheuer, and the Safety on the Water Practical Skills Course were very well received, with more information evenings planned throughout the winter months to keep everyone connected and learning during the off-season.

Our Twilight BBQ evenings continue to grow in popularity, with increased numbers gathering on the deck after racing to share sailing highlights, replay "hero moments," and gently joke about the competition and the occasional tactical disaster. We have also been delighted to welcome several new members to the club this season, adding fresh faces and great energy to our sailing community.

A very special thank you must go to Bern the Chef and her wonderful team — Billy, Tony and Eloise — for feeding the hungry masses every week with smiles firmly intact, even on those nights when dinner service resembled the miracle of the loaves and fishes, somehow ensuring nobody went home hungry.

The introduction of our new Square payment system, thanks to Tim Fletcher, has also been a great success. It has streamlined payments for both our catering team and members, making life much easier for everyone involved.

I would also like to sincerely thank our generous sponsors:

- Robert Oatley Wines
- Zjoosh
- Helly Hansen
- Doyle Sails
- Joe Walsh Rigging
- GWM Pennant Hills

Throughout the season, members enjoyed some fantastic prizes thanks to the generosity of these sponsors.

Following our Centenary celebrations last year, Wayne Rigney from “Zjoosh” very kindly presented the club with 500 wine glasses engraved with our club logo and “100 Years.”

Many members were lucky enough to win one of these special keepsakes throughout the season — a wonderful reminder of such a significant milestone in our club’s history.

Robert Oatley Wines have once again been incredibly generous supporters of the club, with a loyal sponsorship spanning some 15 years. Their continued support is greatly appreciated by all members.

Helly Hansen also once again supported the club this season and, in conjunction with Maree and Adrian van Bellen, generously organised four Helly Hansen jackets to be won throughout the Spring and Autumn series. Every four weeks, first, second and third place winners from each race division were entered into the draw, making the jacket presentations a very popular and eagerly anticipated event. Many thanks to Maree and Adrian for their kindness and generosity in organising this initiative.

My special thanks also go to our wonderful committee, Kathy Hawkins and Maree van Bellen, who are always quietly working in the background and offering a helping hand whenever needed. Clubs like ours simply do not function without people like them.

While you all take a break from Twilights over winter, we look forward to another fun-filled and successful season ahead.

Happy sailing, stay warm, and may your winter maintenance lists be shorter than expected! ☺ ⚓



Junior Sailing and GFS

Congratulations to Jason and the whole Junior sailing team. The Families put together a wonderful thank you e-card which was so very well received.

THANKS FOR A GREAT SEASON

From The GFS Junior Sailors



Thanks for an amazing term on the water!

- Toby



Thanks Jason, Janelle, Chris and all the volunteers for all your time and patience through out the season. Noah and Aiden loved every minute and their confidence has grown so much this season. Thanks for all the support and encouragement.

- Menezes Family



Thanks Jason, Janelle and Chris for giving up your time and energy! You have created an incredible summer of sailing for the boys and they have so many happy memories from it. See you next summer!

- Liz, Simon, George and Felix x



Thank you Jason, Janelle, Chris and all the volunteers for an amazing season of sailing. Zubin has enjoyed every minute of it.

- The D'Costas



Thanks Jason, Janelle and Chris for the enormous effort you guys put in to make the kids sailing experience so much fun. Oscar has really enjoyed it. X

- Abby, Dom and Oscar



Thank you so much! I have had a wonderful sailing season because of you. I can't wait for next year. Thanks for all the time and effort you put into coaching us - Xander

Xander has loved his first season of sailing. Can't thank you enough for the support and encouragement you've given him. Such a beautiful community. We feel very lucky to have been part of it. See you next season! - Julia and Peter

- Xander, Julia and Peter



Brooklyn has absolutely loved his first season of Sailing! Thank you so much for your wonderful teaching and support... we are extremely grateful for everything you have done to give him (and all the kids!) this amazing opportunity! We're excited as to where this might take him. Thanks a million!

- Brooklyn, Natalie & Damian Speer



Hi Jason and Janelle,

Thank you so much for including us in this summer's Tiny Sailors program! Jason, you do a fantastic job pulling everyone together, and we are so happy to be a part of the GFS family.

Thank you both for your enthusiasm and the encouraging support you've given to help build Orla's confidence on the water. She absolutely loves the 'buzz' around the club and going to Cockatoo island on Gerry's yacht. It is such a special opportunity for me to share my passion for sailing with my daughter at such a beautiful club with a great community. Thank you!

- Orla, Katie & Paul



Thanks very much Jase, Janelle and Chris - Jamie is enjoying his Sunday sailing very much. He now knows his knots, but is yet to remember to duck! We appreciate the effort you all put in to making it such a fun day for them all. He's made some great friends, and can't wait for next season.

- Jamie, Katie and Alex



Thanks for a really great season, really appreciate all your efforts and hard work to deliver this wonderful program!

- Caroline, Hartley and Gordon

Wrap Up on the Women's Helm

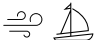
Leigh McLaughlin (Vice Commodore)

As a flagship event in support of GFS's mission to welcome and encourage women, the Women's Helm achieved its goal.

The expanded Women's Helm Series was a success, with strong participation and an enthusiastic response from participants.

Women appreciated the opportunity to become better sailors while mentors gained skills in coaching and communication. The broader benefits included new connections and camaraderie among Club members.

Mentors, Helmswomen and Crew are already signing up for next season's event and our coach and mentor Vanessa Dudley is on board for next season.

Following a short break, we'll be back to the drawing board to design and run next year's Women's Helm Series. To make this happen we need a working group of members who are keen to get involved and lend a hand. We'd like men, women, boat owners, crew members and anyone else keen to get involved. Please contact me for a chat. Leigh McLaughlin vicecommodore@gfs.org.au 



2026 Women's Helm Winner, Lucy Windeyer, on Conquista. Photo Tim Fletcher

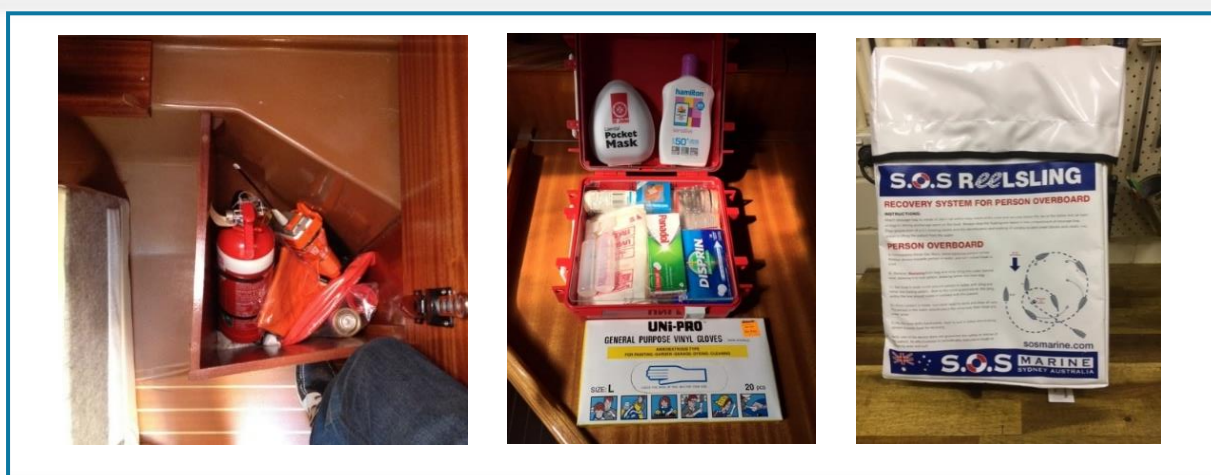
Safety Update

Roger Gee, Safety Officer

For some time now GFS has been trying to improve the safety culture within the Club. Slowly but surely we are seeing the benefits of this in reduced Incident Reports and in the amount of damage to boats. It is the skippers responsibility to ensure all crew on board have a good understanding of emergency equipment, its location, and how to use it.

One way I have found that works is to send out an email to the crew just before the season starts with photos of the various pieces of emergency equipment and its location. It is very easy to photo the items and then add their location if it is not obvious in the photo. Skippers could provide a plan of the boat and asked the crew to indicate where each piece of equipment is located.

Having been an airline pilot, I am very aware of the importance of knowing the location of each piece of equipment and so I have put most of my equipment in one place on the boat, easily accessible and away from common causes of say fire (stove & engine). I use below the navigator's seat or under the Nav table.



A good way of getting the message across is to have a photo of the SOS Sling with the recommended, but not the only way, to recover a person overboard.

Safety must come first and it is the skipper's responsibility to ensure crew are familiar with equipment, how to use it and where it is located.

That's it from me. Safe Sailing 🚤

GFS memorial sites on West harbour

John Amos, Chainsaw

The late Rob McCauley coined the term: "The Libertine Memorial Lamp Post". I have followed him to describe past incidents that have occurred during hard fought GFS twilight races.

The Libertine Memorial Lamp Post

A J24 named Libertine hit and broke its forestay on the southernmost lamppost when rounding the southeast corner of Goat Island to starboard.

The Infidel Memorial Gutter and Downpipe

Another J-24, Infidel, closely rounding the northwest corner of Spectacle Island to starboard was hit by a gust and the top of its mast hit and pull down the gutter and downpipe of the building on the corner of the island.

The Rameses Memorial Finger Wharf

A cavalier 37, Rameses, came into contact with the wooden Wharf on the northern side of Goat Island. The skipper used his hand to fend off and received one flattened finger and many medical appointments.

The Pirihi Memorial Shed Wall

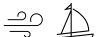
Pirihi, a young 99, went out of control on the northern side of Goat Island. It spun around and its hoisted spinnaker pole punched a hole in the side of the wooden shed on the edge of the wharf.

The Flashback Memorial Port Hand Marker Light

Flashback, a young 40, was rounding the red port hand marker, northeast of Goat Island, to starboard when its loose runner hooked around the light on the top of the marker and pulled it off with a loud bang.

Amos Reef

In 1992 I grounded my seaway 25 on the reef that runs southwest from Greenwich Point. It is now known as Amos Reef

In 1989 Sydney Harbour was given a newly-named reef, Conner Reef. U.S sailing legend, Dennis Conner grounded his AC 12-metre on the southwest corner of Shark Island. GFS wasn't too far behind in the naming of reefs. 

Sailing Discussion – Headsail Trim when the Wind Blows

Tim Fletcher, Editor

This is the second in a series of articles on sail trim. The idea is to generate discussion regarding sailing technique. Given some of the winds we have seen lately, I thought this one was an apt topic. I welcome people's thoughts and contributions. I would like for this to be an ongoing section in Humbug. I recently received some great tips from our Commodore, Steve Bradley, on sail setting for different wind conditions. I am hoping to twist his arm to providing an article or two going forward 😊

When the wind picks up, your mainsail and headsail need to work as a single aerodynamic unit. If you only depower the main but leave the headsail in tight, the boat will become unbalanced, develop "lee helm," or simply heel over from the front.

To keep the boat "in the groove," you need to match the shape and twist of both sails.

1. Matching the Twist (The "Slot")

The space between the back of the headsail and the front of the main is the **slot**. In heavy air, if the headsail is too tight and the main is eased, the wind off the headsail will hit the back of the main, causing it to flap (the "bubble").

- **Move headsail sheets Aft:** Move your headsail cars back. This puts more tension on the foot (flattening the bottom) and allows the top of the headsail to twist open.
- **Coordinate with the Main:** This matches the twist you've already put into the mainsail, allowing both sails to spill air at the same height. This keeps the "slot" open and prevents the boat from being choked.

2. Managing the Centre of Effort

Sailing balance is a tug-of-war between the sails and the keel.

- **Weather Helm:** If the main is too powerful, the boat wants to turn *into* the wind.
- **Lee Helm:** If you depower the main too much while the headsail is still at full power, the boat wants to turn *away* from the wind. This is dangerous because the boat becomes unresponsive.

The Fix: Always depower both sails incrementally. If you drop the traveller on the main, make sure you've also moved your headsail sheets back or slightly eased the headsail sheet to keep the boat's driving force centred.

3. Flattening the Entry

Just like the main, a "fat" headsail entry (the front edge) will cause the boat to heel and make it harder to steer through waves.

- **headsail Halyard:** Increase tension. This pulls the draft forward and flattens the entry of the sail.
- **The Benefit:** A flatter entry gives you a narrower "steering groove," but it stops the boat from "stalling out" and heeling every time a gust hits.

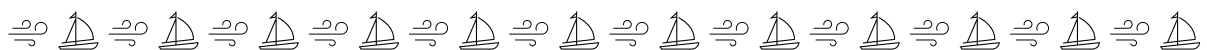
4. The "Heel Test" Coordination

When a gust hits, the trimmers and helm should work together:

1. **The Gust Hits:** The main trimmer drops the traveller or eases the mainsheet.
2. **The Balance:** If the boat still feels "stuck" or heavy, the headsail trimmer should "crack" the headsail sheet (ease it an inch or two).
3. **The Result:** The boat stays upright, accelerates forward instead of sideways, and the helm stays light and neutral.

Goal	Mainsail Action	Jib/Genoa Action
Flatten Shape	Increase Outhaul & Backstay	Increase Halyard Tension
Open the Top	Ease Sheet / Drop Traveler	Move Jib Leads Aft
Reduce Drag	Move Draft Forward (Cunningham)	Ease Sheet slightly (Crack the Jib)

Happy Sailing



GFS Sponsors

Helly Hansen



Helly Hansen is a company manufacturing professional grade gear. It offers technical sailing and performance ski apparel, as well as premium workwear. The Company provides clothing and footwear for sailing, hiking and other outdoor activities.

Joe Walsh Rigging

Joe Walsh Rigging specialises in all marine and architectural rigging, masts and spar fabrication, repair, painting, all rigging requirements, furling systems and AYF Rig Insurance Inspections. Located at Woolwich Marina.



Doyle Sails Sydney



Doyle Sails Sydney is in Gladesville. Services include an in-house design team, laser cutter and modern machinery for new sails, repairs, covers and ongoing service.

Oatley Wines



Robert Oatley Wines celebrates the memory of Bob Oatley through a trio of labels: the maritime-influenced Signature Series, the specific vineyard focused Finisterre, and the best of the best barrels under The Pennant label. They focus on wines from Margaret River and McLaren Vale.

Zjoosh ZJOOSH

Located in Lane Cove, Zjoosh is a unique Australian lifestyle brand. It specialises in "the finishing touches". From its early beginnings as a fashion jewellery and accessories brand, Zjoosh has now broadened to homeware and gifts.

GWM Pennant Hills

GWM Pennant Hills is a family-owned business that has been operating at the same location at Thornleigh, since 1984. The business has maintained a strong association with GFS for over 20 years. GWM offers a modern and dynamic range of electric vehicles (EVs), hybrids, SUVs, Utes, and FWD vehicles.



GFS Twilight Season Race Results

Place	Sai#	BOAT NAME	Skipper	Series	Div
1st	SM226	RED WILLIAM	James Kearney	Spring	Orange
2nd	1000	BARUBI	Michael Wise	Spring	Orange
3rd	4640	ZANDA	Philip McGrath	Spring	Orange
1st	5673	ON Y VA!	Bruce Hilliard	Spring	Gold
2nd	2156	ECHO	Gerald Morcombe	Spring	Gold
3rd	808	BANJO	Nick Reed	Spring	Gold
1st	3608	JOKA	C Williams/A Terrey/A Dunlop	Spring	White
2nd	6694	PACA	Greg Jacques	Spring	White
3rd	3127	CAPRIOLE	Geoffrey Lucas	Spring	White
1st	7073	SERENDIPITY	Peter May	Spring	Green
2nd	4517	FUZZY LOGIC	Andrew Glassock	Spring	Green
3rd	7129	HASTA LA VISTA	Andrew Nelson	Spring	Green
1st	6635	WORLDS APART	Christopher Stannard	Spring	Blue
2nd	2679	MYUNA III	Jaime Parima	Spring	Blue
3rd	7080	MINNOW	Richard Grundy	Spring	Blue
1st	7177	MERIDIAN	Steve Bradley	Spring	Black
2nd	8800	FIREBALL	William Lea	Spring	Black
3rd	2806	PASSION XI	David Edmiston	Spring	Black
1st	AUS1256	ADRENALINE	Rolf Lunsmann	Spring	Etchells
2nd	AUS1163	WHISKEY TANGO FOXTROT	Mark Jansons	Spring	Etchells
3rd	AUS1049	ETCHIBAN	Graham/Tom/Kev	Spring	Etchells
1st	325	RESTLESS	Leigh McLaughlin/Margie Powell	Summer	Orange
2nd	16	GRETA	Andrew Davidson/Clive Hassett	Summer	Orange
2nd	5596	DOLPHIN II	Johan Brinch	Summer	Orange
1st	808	BANJO	Nick Reed	Summer	Gold
2nd	2156	ECHO	Gerald Morcombe	Summer	Gold
3rd	GBR32	JESTER	Timothy Harrington	Summer	Gold
1st	T058	ALLONS-Y	Jacques Calluud	Summer	White
1st	6927	VITESSE	Glenda Cameron-Strange	Summer	White
3rd	3608	JOKA	C Williams/A Terrey/A Dunlop	Summer	White
1st	8456	VESILLE	Patrick Medley	Summer	Green
2nd	4409	SILVER SPRAY	David Wells	Summer	Green
3rd	R7	WIND CHARMER	Peter Francis	Summer	Green
1st	7131	PERIPATUS	Colin Worner	Summer	Blue
2nd	6635	WORLDS APART	Christopher Stannard	Summer	Blue
2nd	7080	MINNOW	Richard Grundy	Summer	Blue
1st	8800	FIREBALL	William Lea	Summer	Black
2nd	7177	MERIDIAN	Steve Bradley	Summer	Black
3rd	6774	JACKPOT	Robert Hale	Summer	Black
1st	AUS1049	ETCHIBAN	Graham/Tom/Kev	Summer	Etchells
2nd	AUS762	CHLOE	Jason Andersen	Summer	Etchells
3rd	AUS1293/1249	INCENTIVE	Andrew Rickard	Summer	Etchells

GFS Twilight Season Race Results (Cont.)

Place	Sai#	BOAT NAME	Skipper	Series	Div
1st	16	GRETA	Andrew Davidson/Clive Hasset	Autumn	Orange
2nd	SM226	RED WILLIAM	James Kearney	Autumn	Orange
3rd	325	RESTLESS	Leigh McLaughlin/Margie Powell	Autumn	Orange
1st	M88	3 DOGS	Michael Rooney	Autumn	Gold
2nd	GBR32	JESTER	Timothy Harrington	Autumn	Gold
3rd	808	BANJO	Nick Reed	Autumn	Gold
3rd	2156	ECHO	Gerald Morcombe	Autumn	Gold
1st	JKA125	PEA JAY	David Dossetor	Autumn	White
2nd	3127	CAPRIOLE	Geoffrey Lucas	Autumn	White
3rd	JAUS158	JAYDED	Steve Butel	Autumn	White
1st	6334	SHERMOZZLE	John Hayward	Autumn	Green
2nd	8456	VESILLE	Patrick Medley	Autumn	Green
2nd	4409	SILVER SPRAY	David Wells	Autumn	Green
1st	6635	WORLDS APART	Christopher Stannard	Autumn	Blue
1st	880	CARDINAL SYN	Jorgen Kristoffersen	Autumn	Blue
2nd	4150	FRENCH CONNECTION	Michael Murphy	Autumn	Blue
1st	8800	FIREBALL	William Lea	Autumn	Black
2nd	6774	JACKPOT	Robert Hale	Autumn	Black
3rd	6755	GWM PENNANT HILLS	Ian Creak	Autumn	Black
1st	AUS1049	ETCHIBAN	Graham/Tom/Kev	Autumn	Etchells
2nd	AUS762	CHLOE	Jason Andersen	Autumn	Etchells
3rd	AUS1293/1249	INCENTIVE	Andrew Rickard	Autumn	Etchells
1st	SM226	RED WILLIAM	James Kearney	Overall	Orange
2nd	16	GRETA	Andrew Davidson/Clive Hasset	Overall	Orange
3rd	1000	BARUBI	Michael Wise	Overall	Orange
1st	5673	ON Y VA!	Bruce Hilliard	Overall	Gold
2nd	2156	ECHO	Gerald Morcombe	Overall	Gold
1st	GBR32	JESTER	Timothy Harrington	Overall	Gold
1st	3127	CAPRIOLE	Geoffrey Lucas	Overall	White
2nd	3608	JOKA	C Williams/A Terrey/A Dunlop	Overall	White
3rd	6694	PACA	Greg Jacques	Overall	White
1st	6334	SHEMOZZLE	John Hayward	Overall	Green
2nd	8456	VESILLE	Patrick Medley	Overall	Green
3rd	4517	FUZZY LOGIC	Andrew Glassock	Overall	Green
1st	6635	WORLDS APART	Christopher Stannard	Overall	Blue
2nd	880	CARDINAL SYN	Jorgen Kristoffersen	Overall	Blue
3rd	4150	FRENCH CONNECTION	Michael Murphy	Overall	Blue
1st	8800	FIREBALL	William Lea	Overall	Black
2nd	2806	PASSION XI	David Edmiston	Overall	Black
3rd	6115	CHAINSAW	John Amos	Overall	Black
1st	AUS1049	ETCHIBAN	Graham/Tom/Kev	Overall	Etchells
2nd	AUS1293/1249	INCENTIVE	Andrew Rickard	Overall	Etchells
3rd	AUS1256	ADRENALINE	Rolf Lunsmann	Overall	Etchells

GFS Saturday Season Race Results

Place	Sai#	BOAT NAME	Skipper	Series	Div
1st	AUS759	TISM	Ritchie Lees	Spring Series	1
2nd	AUS1125	TONIC	Malcolm Blomfield	Spring Series	1
3rd	7129	HASTA LA VISTA	John Veale	Spring Series	1
1st	6694	PACA	Greg Jacques	Spring Series	2
2nd	3608	JOKA	Donald Proctor	Spring Series	2
3rd	1531	FLAIR	Phil Hare	Spring Series	2
1st	AUS1256	ADRENALINE	Rolf Lunsmann	Summer Series	1
2nd	AUS759	TISM	Ritchie Lees	Summer Series	1
3rd	7129	HASTA LA VISTA	John Veale	Summer Series	1
1st	3608	JOKA	Donald Proctor	Summer Series	2
2nd	6694	PACA	Greg Jacques	Summer Series	2
3rd	1531	FLAIR	Phil Hare	Summer Series	2
1st	5673	ON Y VA!	Bruce Hilliard	Down Harbour Series	1
2nd	SM407	BUSHRANGER	Stuart McLean	Down Harbour Series	1
2nd	6380	TANA	Pam Joy	Down Harbour Series	1
1st	AUS759	TISM	Ritchie Lees	Down Harbour Series	2
2nd	AUS1125	TONIC	Malcolm Blomfield	Down Harbour Series	2
3rd	AUS1163	WHISKEY TANGO FOXTROT	Mark Jansons	Down Harbour Series	2
1st	6694	PACA	Greg Jacques	Down Harbour Series	3
2nd	3608	JOKA	Donald Proctor	Down Harbour Series	3
3rd	1531	FLAIR	Phil Hare	Down Harbour Series	3
	5673	ON Y VA!	Bruce Hilliard	Joe Walsh Rigging Trophy	Blue (1)
	AUS759	TISM	Ritchie Lees and Michael Coleman	Joe Walsh Rigging Trophy	White (2)
	6694	PACA	Greg Jaques and Andrew Wise	Joe Walsh Rigging Trophy	Red (3)
	6694	PACA	Greg Jaques and Andrew Wise	Ian Cohen Memorial Trophy	
	AUS1256	ADRENALINE	Rolf Lunsmann	Ian Thorpe Trophy (Shared)	
	3608	JOKA	Donald Proctor	Ian Thorpe Trophy (Shared)	
	AUS759	TISM	Ritchie Lees and Michael Coleman	Mick York Series Trophy	
	AUS760	TISM	Ritchie Lees and Michael Coleman	Greenwich Yardstick Trophy	
	AUS759	TISM	Ritchie Lees and Michael Coleman	Crows Nest Ship Chandlers Pty Ltd Trophy	
	3608	JOKA	Donald Proctor	John Dowd Trophy	
	AUS759	TISM	Ritchie Lees	Old Etchells Trophy (Shared)	
	AUS1163	WHISKEY TANGO FOXTROT	Mark Jansons	Old Etchells Trophy (Shared)	
1st	AUS759	TISM	Ritchie Lees	Mick York Series	1
2nd	3608	JOKA	Donald Proctor	Mick York Series	2
3rd	6694	PACA	Greg Jacques	Mick York Series	3
1st	AUS759	TISM	Ritchie Lees	Saturday Overall Series	1
2nd	AUS1125	TONIC	Malcolm Blomfield	Saturday Overall Series	1
3rd	AUS1256	ADRENALINE	Rolf Lunsmann	Saturday Overall Series	1
1st	3608	JOKA	Donald Proctor	Saturday Overall Series	2
2nd	6694	PACA	Greg Jacques	Saturday Overall Series	2
3rd	1531	FLAIR	Phil Hare	Saturday Overall Series	2
1st	AUS759	TISM	Ritchie Lees	Saturday Autumn Series	1
2nd	AUS1386	ANOTHER ONE	Bruce Hilliard	Saturday Autumn Series	1
3rd	AUS1256	ADRENALINE	Rolf Lunsmann	Saturday Autumn Series	1
1st	3608	JOKA	Donald Proctor	Saturday Autumn Series	2
2nd	6694	PACA	Greg Jacques	Saturday Autumn Series	2
3rd	1531	FLAIR	Phil Hare	Saturday Autumn Series	2
1st	AUS759	TISM	Ritchie Lees	Saturday Etchells Scratch	
1st	AUS1163	WHISKEY TANGO FOXTROT	Mark Jansons	Saturday Etchells Scratch	
3rd	AUS1256	ADRENALINE	Rolf Lunsmann	Saturday Etchells Scratch	
1st	AUS759	TISM	Ritchie Lees	Greenwich Yardstick Series	1
2nd	3608	JOKA	Donald Proctor	Greenwich Yardstick Series	2
3rd	6694	PACA	Greg Jacques	Greenwich Yardstick Series	2

GFS Series Race Results

Place	Sai#	BOAT NAME	Skipper	Series	Div
1st	SM226	RED WILLIAM	James Kearney	Gore Creek Trophy Series	Orange
2nd	16	GRETA	Andrew Davidson/Clive Hassett	Gore Creek Trophy Series	Orange
3rd	1000	BARUBI	Michael Wise	Gore Creek Trophy Series	Orange
1st	6635	WORLDS APART	Christopher Stannard	Balmain and Allan Series	Blue
2nd	8800	FIREBALL	William Lea	Balmain and Allan Series	Black
3rd	SM226	RED WILLIAM	James Kearney	Balmain and Allan Series	Orange
1st	AUS1256	ADRENALINE	Rolf Lunsman	Twilight Etchells Scratch	Etchells
2nd	AUS1163	WHISKEY TANGO FOXTROT	Mark Jansons	Twilight Etchells Scratch	Etchells
3rd	AUS1049	ETCHIBAN	Graham/Tom/Kev	Twilight Etchells Scratch	Etchells
	2806	PASSION XI	David Edmiston	GFS 12ft Flying Squadron Perpetual Winter Series Trophy	
	GBR32	JESTER	Timothy Harrington	Winter Series 'GFS Red' Division Trophy	
	5673	ON Y VA!	Bruce Hilliard	Winter Series Black Division Trophy	
	3608	JOKA	Cec Williams	Winter Series Green Division Trophy	
	AUS1256	ADRENALINE	Rolf Lundsman	Frank Crowe Etchells Trophy	
	SM226	RED WILLIAM	James Kearney	Commodores Shield Orange Division	
	5673	ON Y VA!	Bruce Hilliard	Commodores Shield Gold Division	
	3127	CAPRIOLE	Geoffrey Lucas	Commodores Shield White Division	
	6334	SHERMOZZLE	John Hayward	Commodores Shield Green Division	
	6635	WORLDS APART	Christopher Stannard	Commodores Shield Blue Division	
	8800	FIREBALL	William Lea	Commodores Shield Black Division	
	AUS1049	ETCHIBAN	Graham/Tom/Kev	Commodores Shield Etchells	
	SM226	RED WILLIAM	James Kearney	Gore Creek Trophy	
	6635	WORLDS APART	Christopher Stannard	Balmain and Allan Trophy	
	M138	CONQUISTA	Lucy Windeyer	GFS Womens Helm Series Trophy	
1st	M138	Conquista	Lucy Windeyer	Womens Helm Series	
2nd	7073	Serendipity	Charlie May	Womens Helm Series	
3rd	325	Restless	Margie Powell	Womens Helm Series	